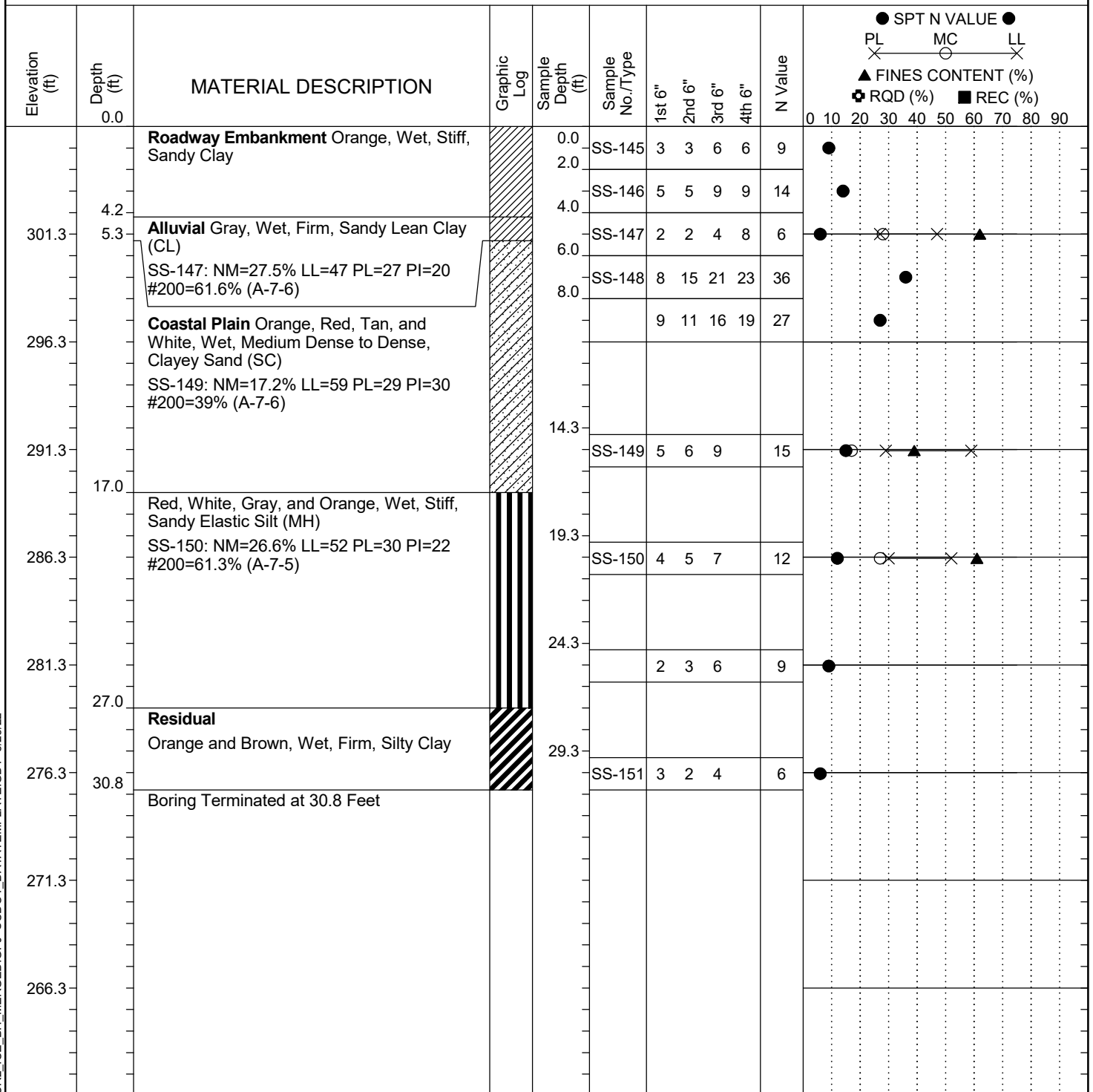


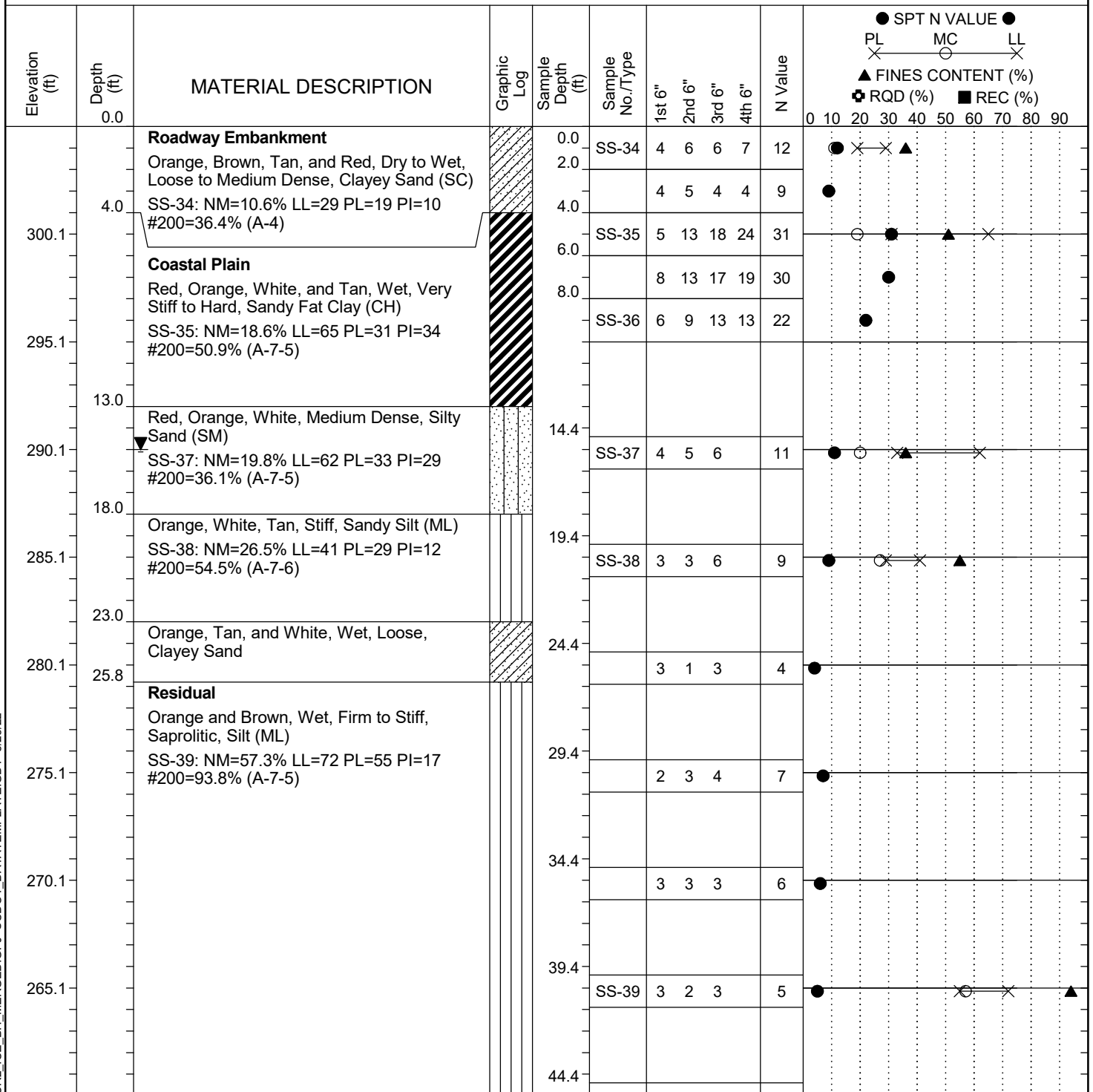
Project ID: P039719				County: Richland		Boring No.: G-015		
Site Description:		Carolina Crossroads Phase 2					Route: I-20	
Eng./Geo.: C. McIlroy		Boring Location: 394+85		Offset: 44 LT		Alignment: I20CL		
Elev.: 306.3 ft		Latitude: 34.03913363		Longitude: -81.0963254		Date Started: 3/17/2022		
Total Depth: 30.8 ft		Soil Depth: 30.8 ft		Core Depth: N/A ft		Date Completed: 3/17/2022		
Bore Hole Diameter (in): 2.25		Sampler Configuration		Liner Required: Y (N)		Liner Used: Y (N)		
Drill Machine: D-50 #435		Drill Method: RW		Hammer Type: Automatic		Energy Ratio: 84.4%		
Core Size: N/A		Driller: M. Morgan		Groundwater: TOB N/A		24HR: N/A		



LEGEND

SAMPLER TYPE			DRILLING METHOD	
SS - Split Spoon	NQ - Rock Core, 1-7/8"		HSA - Hollow Stem Auger	RW - Rotary Wash
UD - Undisturbed Sample	CU - Cuttings		CFA - Continuous Flight Augers	RC - Rock Core
AWG - Rock Core, 1-1/8"	CT - Continuous Tube		DC - Driving Casing	

Project ID:	P039719	County:	Richland	Boring No.:	G-106
Site Description:	Carolina Crossroads Phase 2			Route:	Ramp
Eng./Geo.:	C. McIlroy	Boring Location:	394+91	Offset:	56 LT
Elev.:	305.1 ft	Latitude:	34.03923042	Longitude:	-81.09636541
Date Started:	4/28/2022				
Total Depth:	69.9 ft	Soil Depth:	69.9 ft	Core Depth:	N/A ft
Date Completed:	4/28/2022				
Bore Hole Diameter (in):	2.25	Sampler Configuration		Liner Required:	Y (N)
Liner Used:	Y (N)				
Drill Machine:	D-50 #439	Drill Method:	RW	Hammer Type:	Automatic
Energy Ratio:	90.8%				
Core Size:	N/A	Driller:	R. Cassell	Groundwater:	TOB N/A
24HR	15 ft				



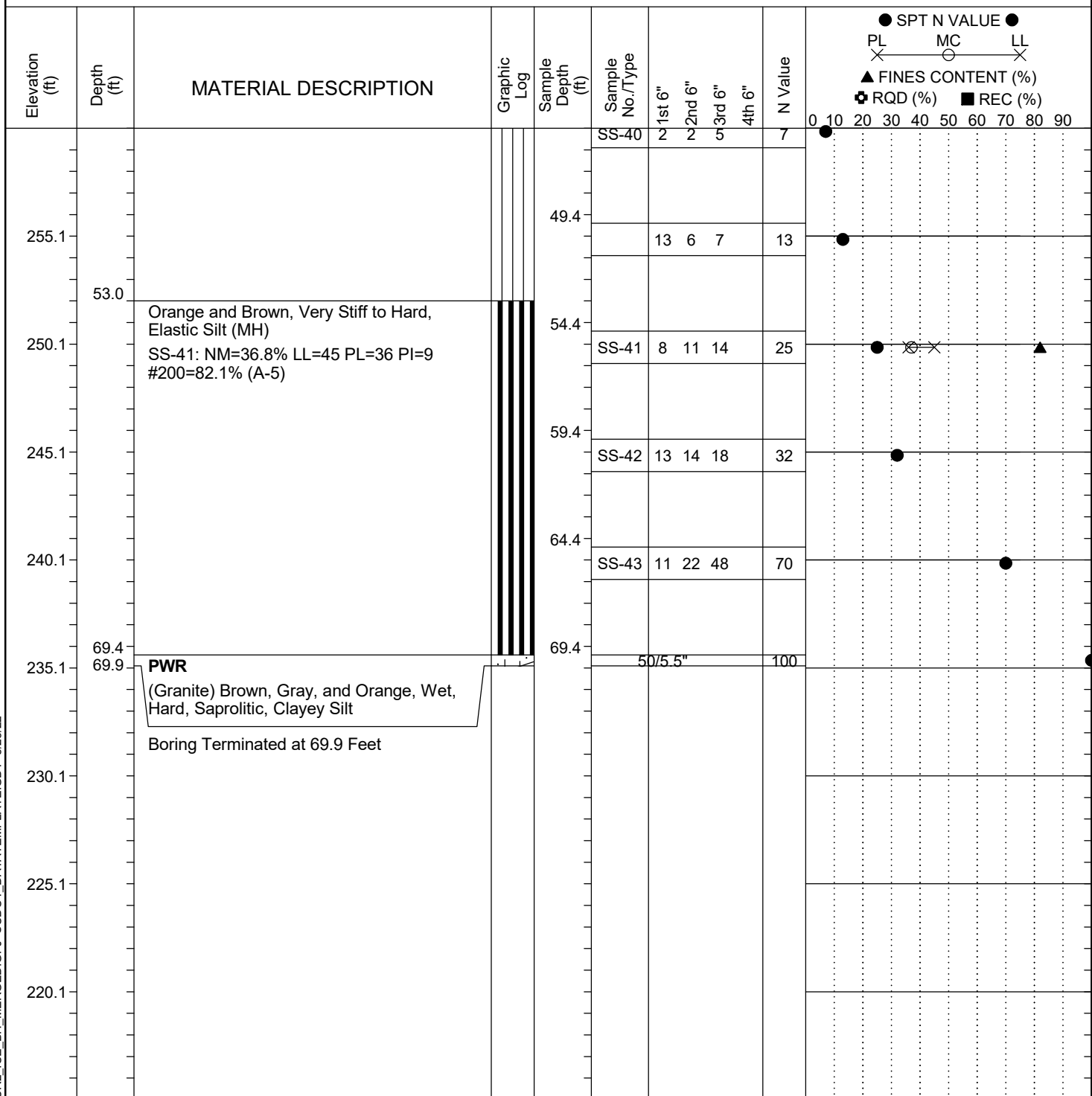
LEGEND

Continued Next Page

SC_DOT_20-01_CCR2_ICE_BH_MERGED.GPJ SCDOT_DATATEMPLATE.GDT 5/23/22

SAMPLER TYPE		DRILLING METHOD	
SS - Split Spoon	NQ - Rock Core, 1-7/8"	HSA - Hollow Stem Auger	RW - Rotary Wash
UD - Undisturbed Sample	CU - Cuttings	CFA - Continuous Flight Augers	RC - Rock Core
AWG - Rock Core, 1-1/8"	CT - Continuous Tube	DC - Driving Casing	

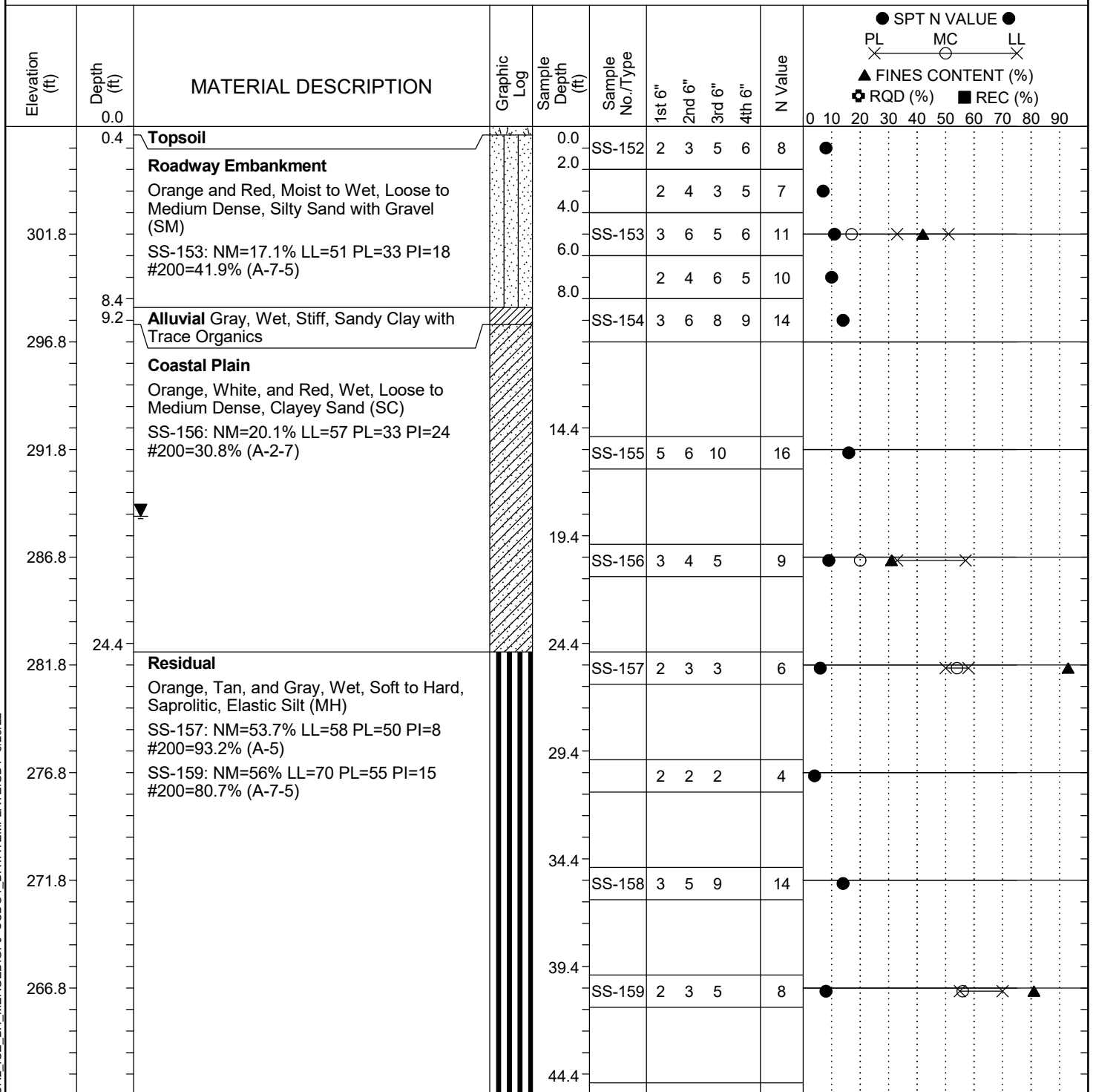
Project ID:	P039719	County:	Richland	Boring No.:	G-106
Site Description:	Carolina Crossroads Phase 2			Route:	Ramp
Eng./Geo.:	C. McIlroy	Boring Location:	394+91	Offset:	56 LT
Elev.:	305.1 ft	Latitude:	34.03923042	Longitude:	-81.09636541
Total Depth:	69.9 ft	Soil Depth:	69.9 ft	Date Started:	4/28/2022
Core Depth:	N/A ft	Date Completed:	4/28/2022	Alignment:	RAMPF
Bore Hole Diameter (in):	2.25	Sampler Configuration		Liner Required:	Y (N)
Drill Machine:	D-50 #439	Drill Method:	RW	Energy Ratio:	90.8%
Core Size:	N/A	Driller:	R. Cassell	Groundwater:	TOB N/A
				24HR	15 ft



LEGEND

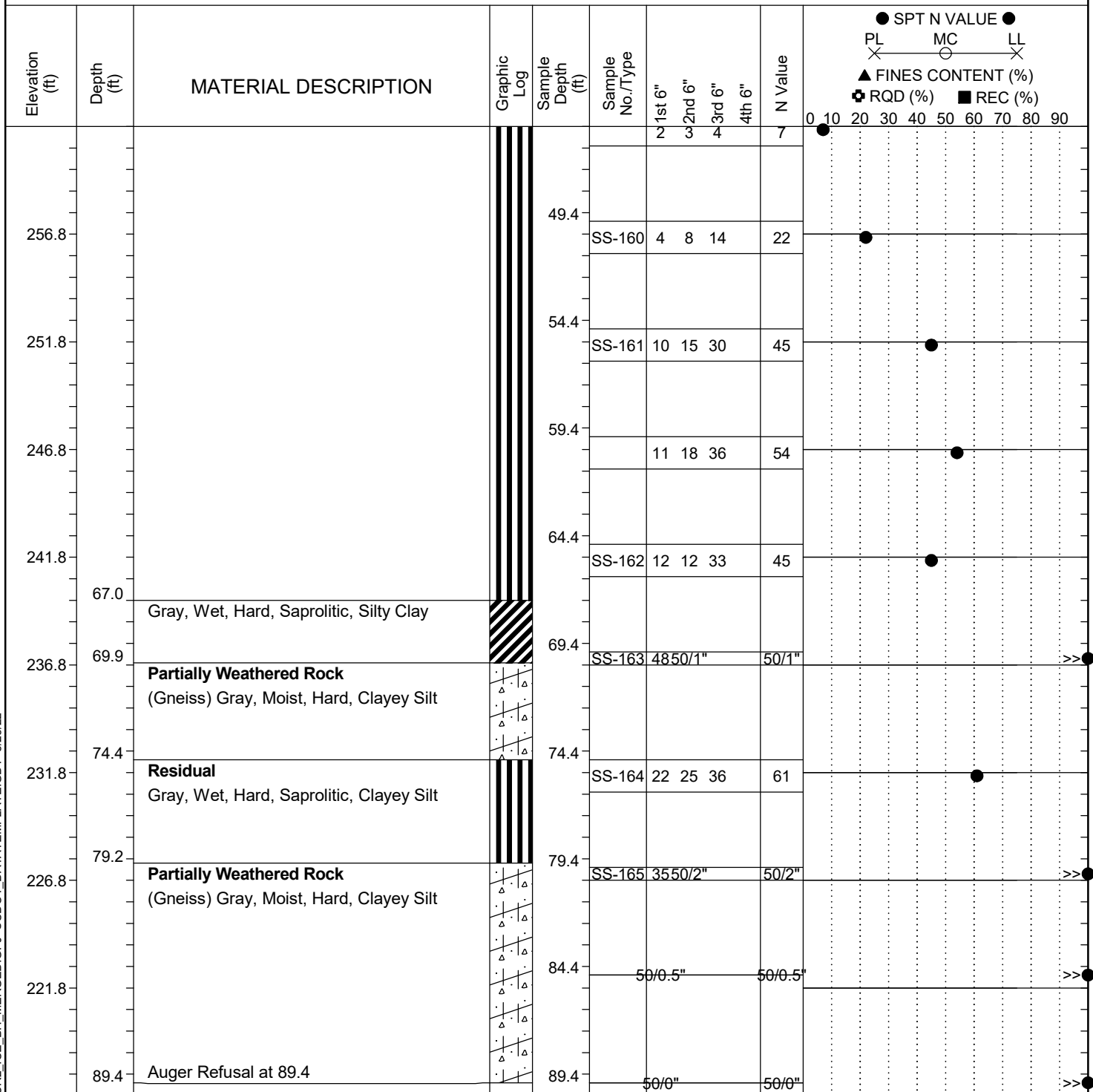
SAMPLER TYPE		DRILLING METHOD	
SS - Split Spoon	NQ - Rock Core, 1-7/8"	HSA - Hollow Stem Auger	RW - Rotary Wash
UD - Undisturbed Sample	CU - Cuttings	CFA - Continuous Flight Augers	RC - Rock Core
AWG - Rock Core, 1-1/8"	CT - Continuous Tube	DC - Driving Casing	

Project ID:	P039719	County:	Richland	Boring No.:	G-107
Site Description:	Carolina Crossroads Phase 2			Route:	Ramp
Eng./Geo.:	C. McIlroy	Boring Location:	395+42	Offset:	41 LT
Elev.:	306.8 ft	Latitude:	34.03920845	Longitude:	-81.09618629
Total Depth:	89.4 ft	Soil Depth:	89.4 ft	Date Started:	3/17/2022
Core Depth:	N/A ft	Date Completed:	3/17/2022	Alignment:	RAMPF
Bore Hole Diameter (in):	2.25	Sampler Configuration		Liner Required:	Y (N)
Drill Machine:	D-50 #435	Drill Method:	RW	Energy Ratio:	84.4%
Core Size:	N/A	Driller:	M. Morgan	Groundwater:	TOB N/A
				24HR	18.1 ft


LEGEND
Continued Next Page

SAMPLER TYPE		DRILLING METHOD	
SS - Split Spoon	NQ - Rock Core, 1-7/8"	HSA - Hollow Stem Auger	RW - Rotary Wash
UD - Undisturbed Sample	CU - Cuttings	CFA - Continuous Flight Augers	RC - Rock Core
AWG - Rock Core, 1-1/8"	CT - Continuous Tube	DC - Driving Casing	

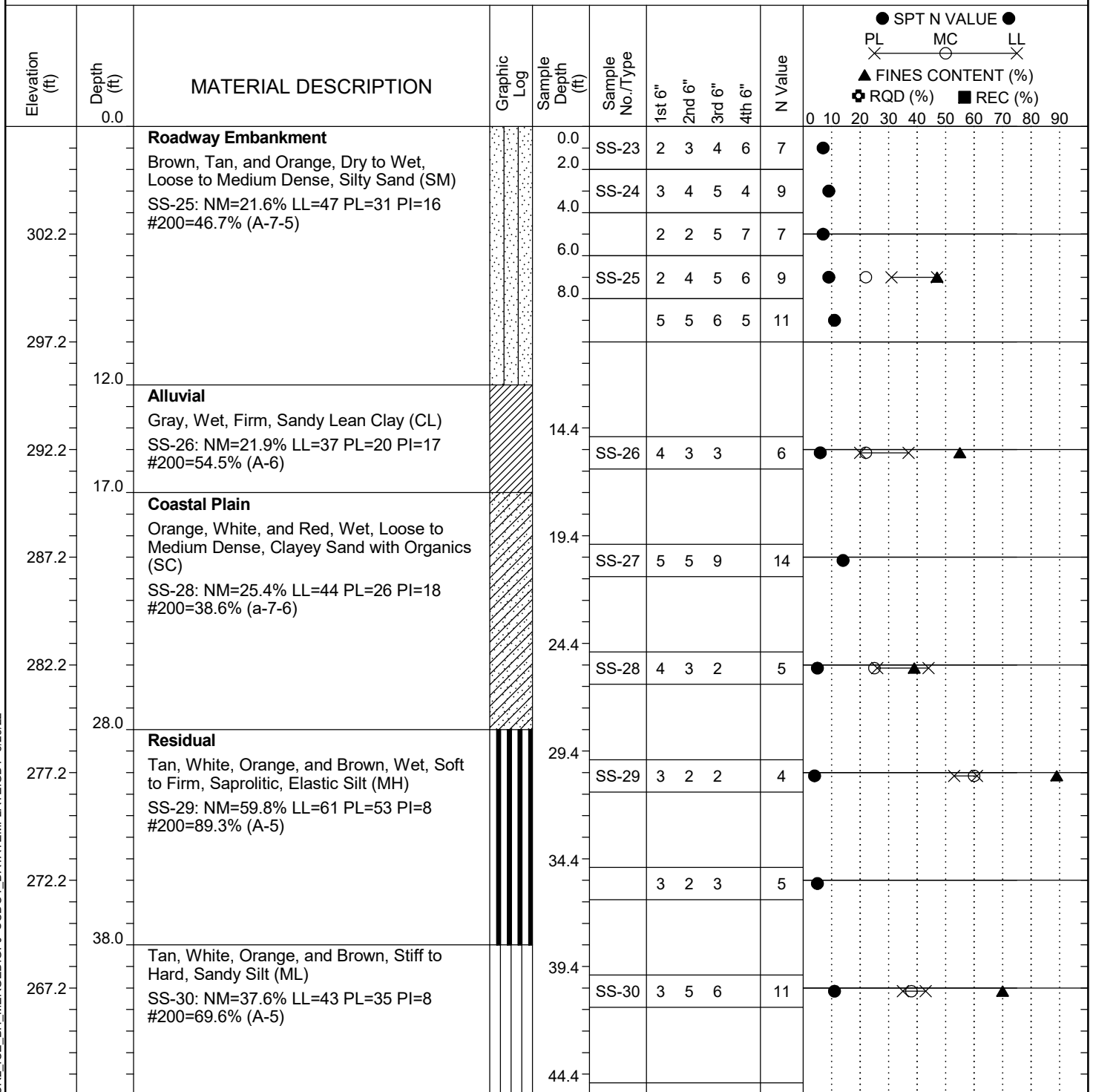
Project ID: P039719				County: Richland		Boring No.: G-107				
Site Description:		Carolina Crossroads Phase 2					Route:	Ramp		
Eng./Geo.: C. McIlroy		Boring Location:		395+42		Offset:	41 LT	Alignment:	RAMPF	
Elev.:	306.8 ft	Latitude:	34.03920845	Longitude:	-81.09618629	Date Started:		3/17/2022		
Total Depth:		89.4 ft	Soil Depth:	89.4 ft	Core Depth:	N/A ft	Date Completed:		3/17/2022	
Bore Hole Diameter (in):		2.25	Sampler Configuration		Liner Required:		Y (N)	Liner Used:		Y (N)
Drill Machine:		D-50 #435	Drill Method:	RW	Hammer Type:		Automatic	Energy Ratio:		84.4%
Core Size:		N/A	Driller:	M. Morgan	Groundwater:	TOB	N/A	24HR	18.1 ft	



LEGEND

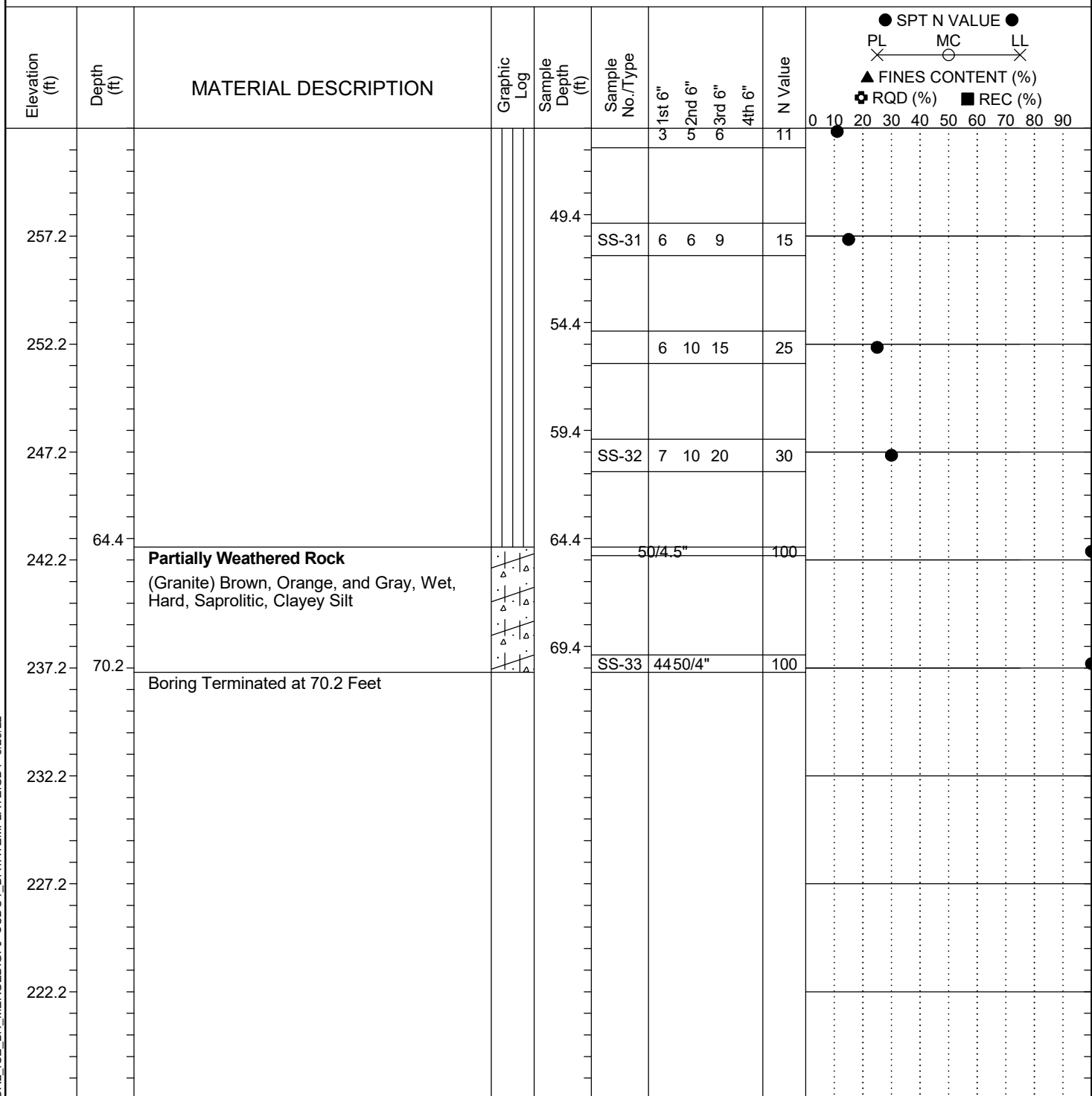
SAMPLER TYPE			DRILLING METHOD	
SS	- Split Spoon	NQ - Rock Core, 1-7/8"	HSA	- Hollow Stem Auger
UD	- Undisturbed Sample	CU - Cuttings	CFA	- Continuous Flight Augers
AWG	- Rock Core, 1-1/8"	CT - Continuous Tube	DC	- Driving Casing
			RW	- Rotary Wash
			RC	- Rock Core

Project ID:	P039719	County:	Richland	Boring No.:	G-108
Site Description:	Carolina Crossroads Phase 2			Route:	Ramp
Eng./Geo.:	C. McIlroy	Boring Location:	395+85	Offset:	36 LT
Elev.:	307.2 ft	Latitude:	34.03923212	Longitude:	-81.09603626
Total Depth:	70.2 ft	Soil Depth:	70.2 ft	Date Started:	4/28/2022
Core Depth:	N/A ft	Date Completed:	4/28/2022	Alignment:	RAMPF
Bore Hole Diameter (in):	2.25	Sampler Configuration		Liner Required:	Y (N)
Drill Machine:	D-50 #439	Drill Method:	RW	Energy Ratio:	90.8%
Core Size:	N/A	Driller:	R. Cassell	Groundwater:	TOB N/A
				24HR	19.1 ft


LEGEND
Continued Next Page

SAMPLER TYPE		DRILLING METHOD	
SS - Split Spoon	NQ - Rock Core, 1-7/8"	HSA - Hollow Stem Auger	RW - Rotary Wash
UD - Undisturbed Sample	CU - Cuttings	CFA - Continuous Flight Augers	RC - Rock Core
AWG - Rock Core, 1-1/8"	CT - Continuous Tube	DC - Driving Casing	

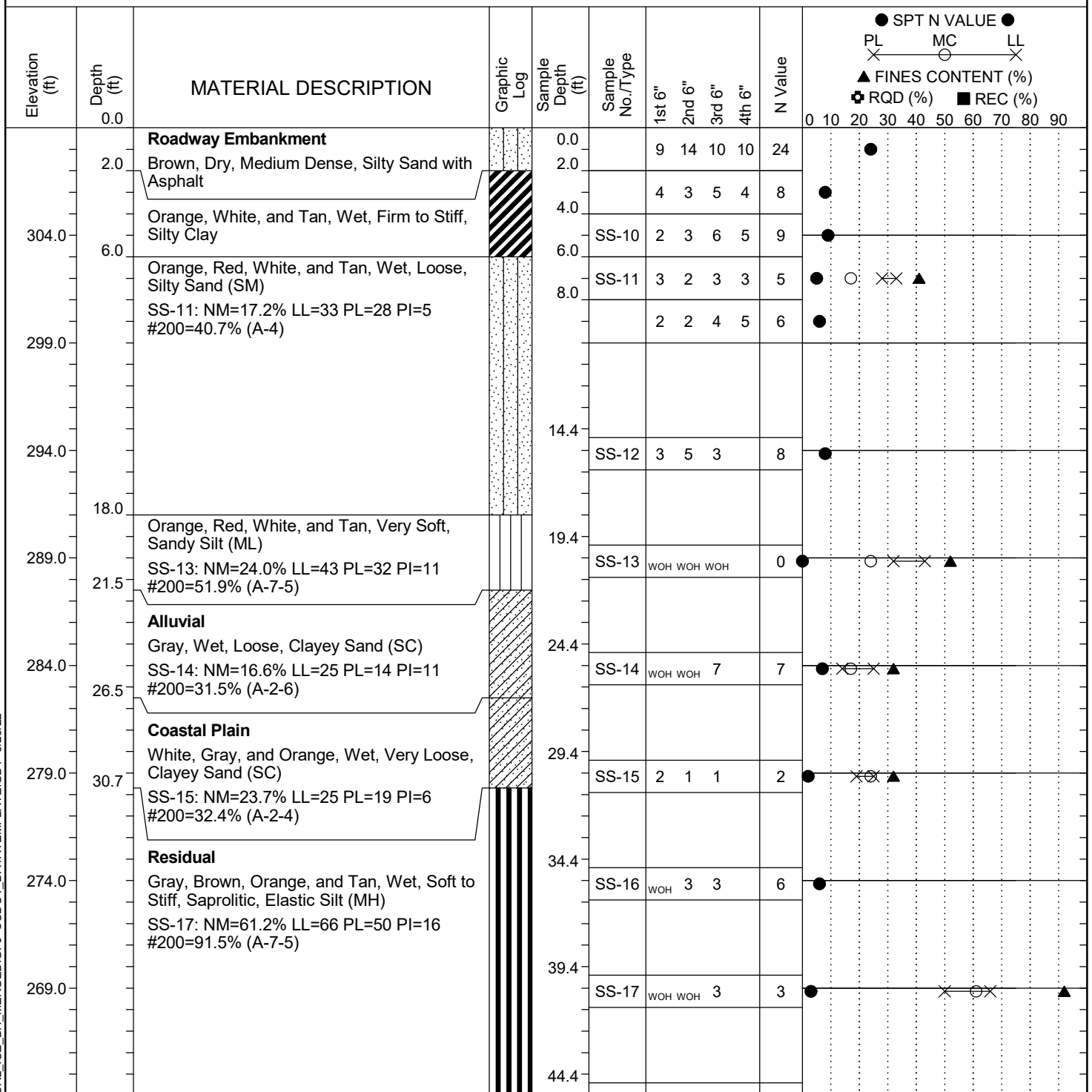
Project ID:	P039719	County:	Richland	Boring No.:	G-108
Site Description:	Carolina Crossroads Phase 2			Route:	Ramp
Eng./Geo.:	C. McIlroy	Boring Location:	395+85	Offset:	36 LT
Elev.:	307.2 ft	Latitude:	34.03923212	Longitude:	-81.09603626
Total Depth:	70.2 ft	Soil Depth:	70.2 ft	Date Started:	4/28/2022
Core Depth:	N/A ft	Date Completed:	4/28/2022	Alignment:	RAMPF
Bore Hole Diameter (in):	2.25	Sampler Configuration		Liner Required:	Y (N)
Drill Machine:	D-50 #439	Drill Method:	RW	Energy Ratio:	90.8%
Core Size:	N/A	Driller:	R. Cassell	Groundwater:	TOB N/A
				24HR	19.1 ft



LEGEND

SAMPLER TYPE		DRILLING METHOD	
SS - Split Spoon	NQ - Rock Core, 1-7/8"	HSA - Hollow Stem Auger	RW - Rotary Wash
UD - Undisturbed Sample	CU - Cuttings	CFA - Continuous Flight Augers	RC - Rock Core
AWG - Rock Core, 1-1/8"	CT - Continuous Tube	DC - Driving Casing	

Project ID:	P039719	County:	Richland	Boring No.:	G-109
Site Description:	Carolina Crossroads Phase 2			Route:	Ramp
Eng./Geo.:	C. McIlroy	Boring Location:	395+91	Offset:	20 RT
Elev.:	309.0 ft	Latitude:	34.03917627	Longitude:	-81.09593509
Total Depth:	84.6 ft	Soil Depth:	84.6 ft	Date Started:	4/27/2022
Core Depth:	N/A ft	Date Completed:	4/27/2022	Alignment:	RAMPF
Bore Hole Diameter (in):	2.25	Sampler Configuration		Liner Required:	Y (N)
Drill Machine:	D-50 #439	Drill Method:	RW	Energy Ratio:	90.8%
Core Size:	N/A	Driller:	R. Cassell	Groundwater:	TOB N/A
				24HR	Dry



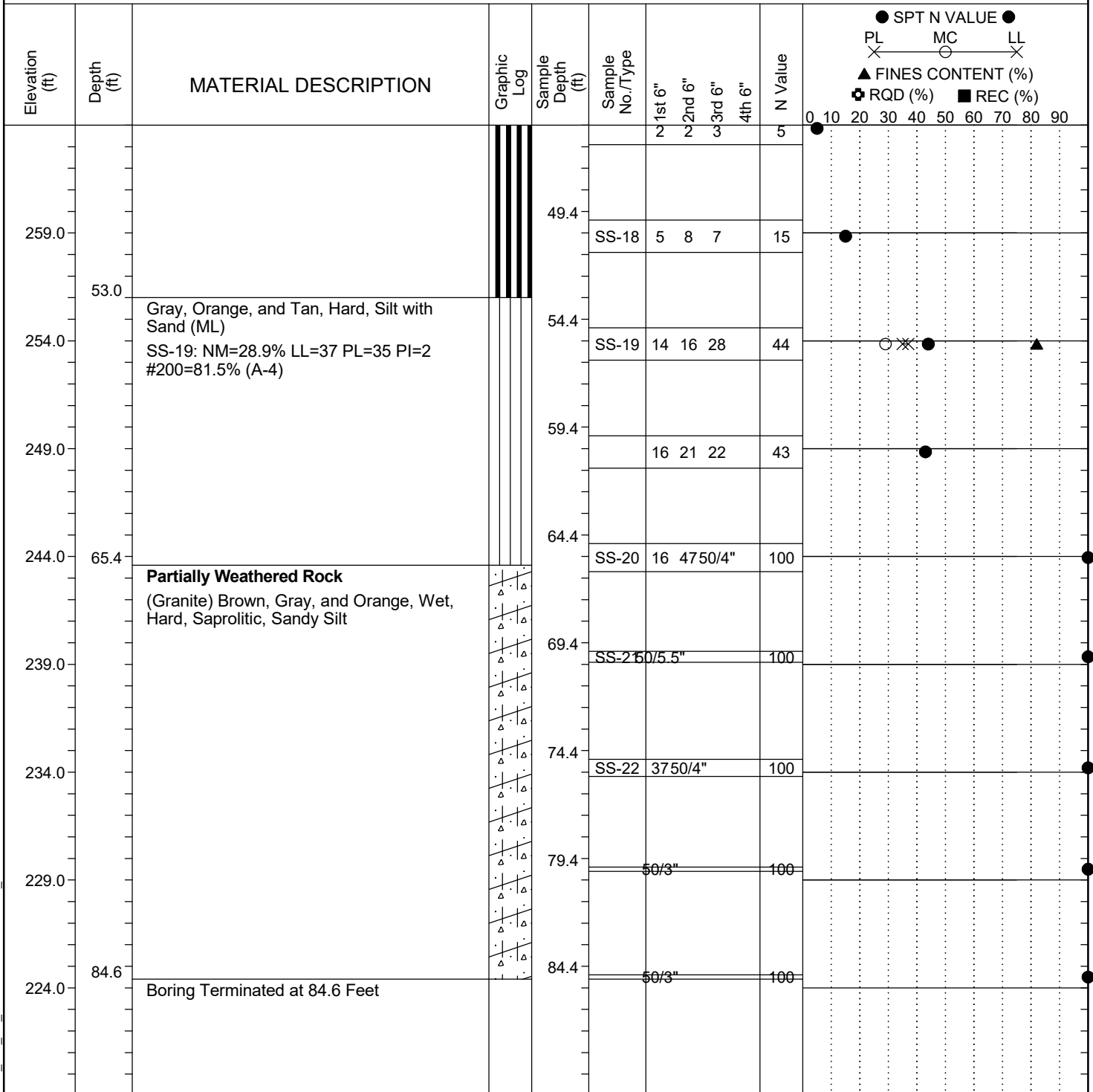
LEGEND

Continued Next Page

SC_DOT 20-01_CCR2_ICE_BH_MERGED.GPJ SCDOT_DATATEMPLATE.GDT 5/23/22

SAMPLER TYPE		DRILLING METHOD	
SS - Split Spoon	NQ - Rock Core, 1-7/8"	HSA - Hollow Stem Auger	RW - Rotary Wash
UD - Undisturbed Sample	CU - Cuttings	CFA - Continuous Flight Augers	RC - Rock Core
AWG - Rock Core, 1-1/8"	CT - Continuous Tube	DC - Driving Casing	

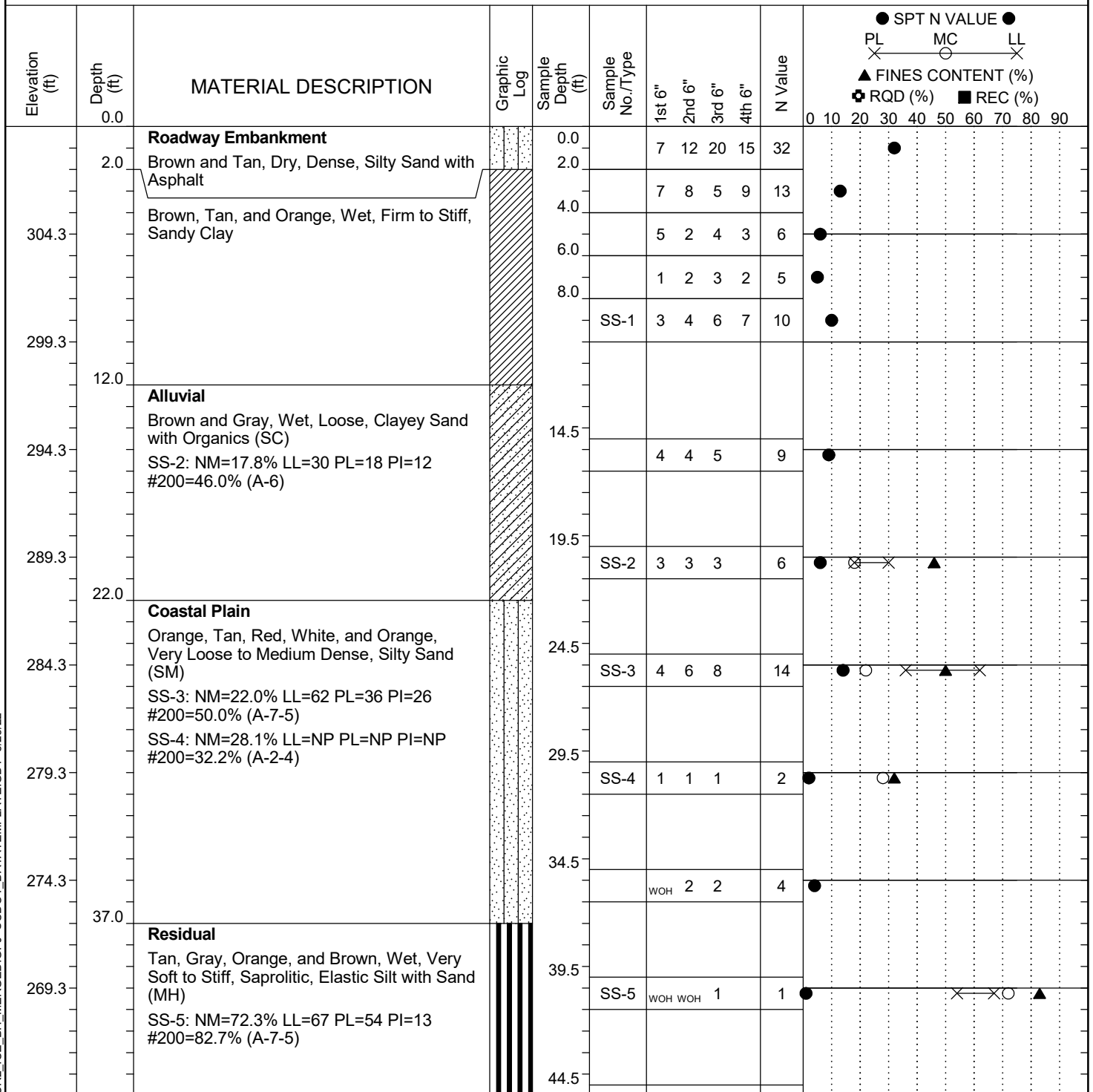
Project ID: P039719				County: Richland		Boring No.: G-109		
Site Description:		Carolina Crossroads Phase 2					Route:	Ramp
Eng./Geo.: C. McIlroy		Boring Location: 395+91		Offset: 20 RT		Alignment:		RAMPF
Elev.: 309.0 ft	Latitude: 34.03917627	Longitude: -81.09593509		Date Started:		4/27/2022		
Total Depth: 84.6 ft	Soil Depth: 84.6 ft	Core Depth: N/A ft		Date Completed:		4/27/2022		
Bore Hole Diameter (in): 2.25		Sampler Configuration		Liner Required: Y (N)		Liner Used: Y (N)		
Drill Machine: D-50 #439		Drill Method: RW		Hammer Type: Automatic		Energy Ratio: 90.8%		
Core Size: N/A		Driller: R. Cassell		Groundwater: TOB N/A		24HR: Dry		



LEGEND

SAMPLER TYPE		DRILLING METHOD	
SS - Split Spoon	NQ - Rock Core, 1-7/8"	HSA - Hollow Stem Auger	RW - Rotary Wash
UD - Undisturbed Sample	CU - Cuttings	CFA - Continuous Flight Augers	RC - Rock Core
AWG - Rock Core, 1-1/8"	CT - Continuous Tube	DC - Driving Casing	

Project ID: P039719				County: Richland		Boring No.: G-110		
Site Description:		Carolina Crossroads Phase 2					Route: Ramp	
Eng./Geo.: C. McIlroy		Boring Location: 396+46			Offset: 28 RT		Alignment: RAMPF	
Elev.: 309.3 ft		Latitude: 34.03921449		Longitude: -81.09577882		Date Started: 4/26/2022		
Total Depth: 69.6 ft		Soil Depth: 69.6 ft		Core Depth: N/A ft		Date Completed: 4/26/2022		
Bore Hole Diameter (in): 2.25		Sampler Configuration			Liner Required: Y (N)		Liner Used: Y (N)	
Drill Machine: D-50 #439		Drill Method: RW		Hammer Type: Automatic		Energy Ratio: 90.8%		
Core Size: N/A		Driller: R. Cassell		Groundwater: TOB N/A		24HR 23.5 ft		



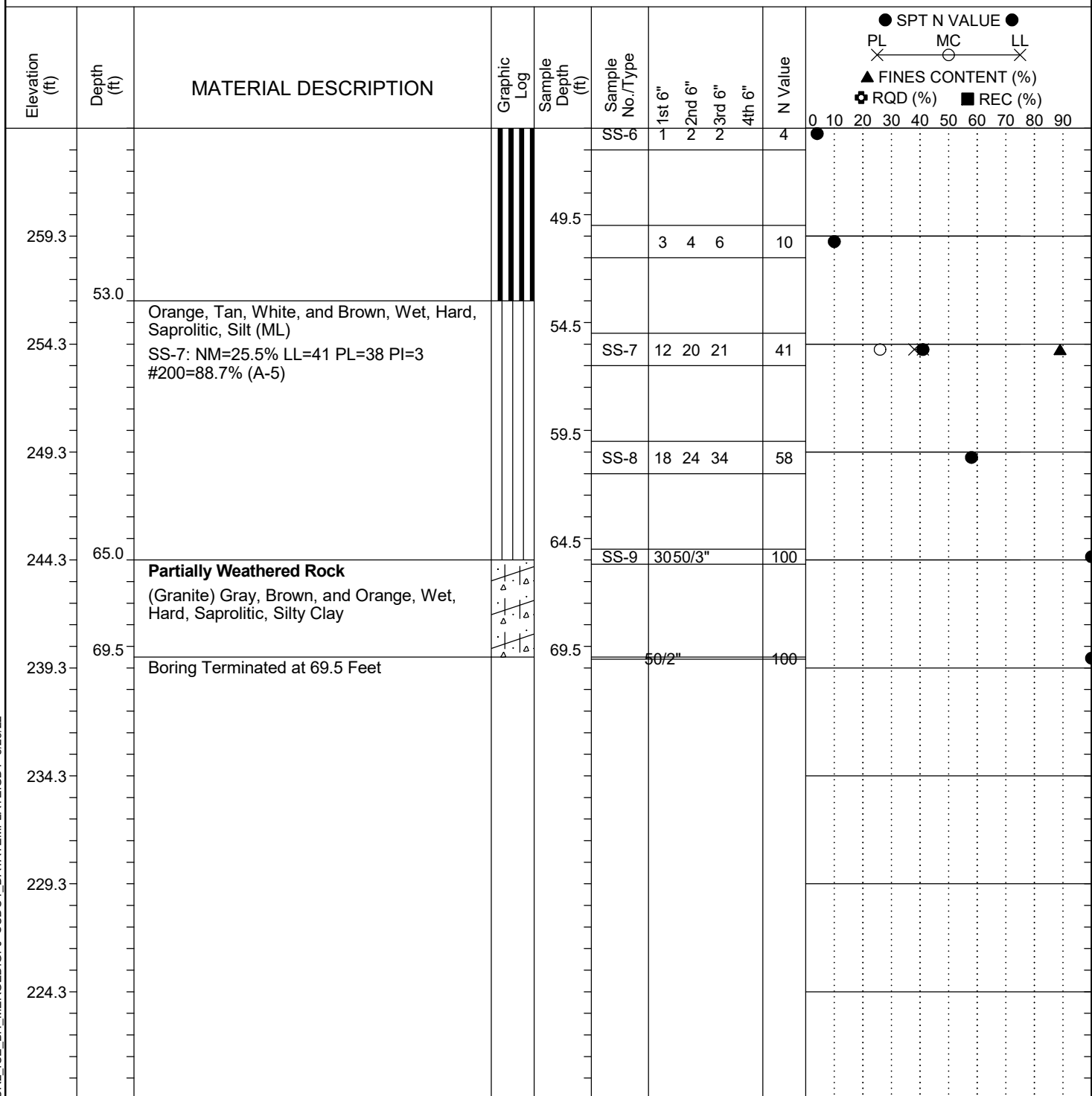
LEGEND

Continued Next Page

SC.DOT 20-81_CCR2_ICE_BH_MERGED.GPJ SCDOT_DATATEMPLATE.GDT 5/23/22

SAMPLER TYPE			DRILLING METHOD	
SS - Split Spoon	NQ - Rock Core, 1-7/8"		HSA - Hollow Stem Auger	RW - Rotary Wash
UD - Undisturbed Sample	CU - Cuttings		CFA - Continuous Flight Augers	RC - Rock Core
AWG - Rock Core, 1-1/8"	CT - Continuous Tube		DC - Driving Casing	

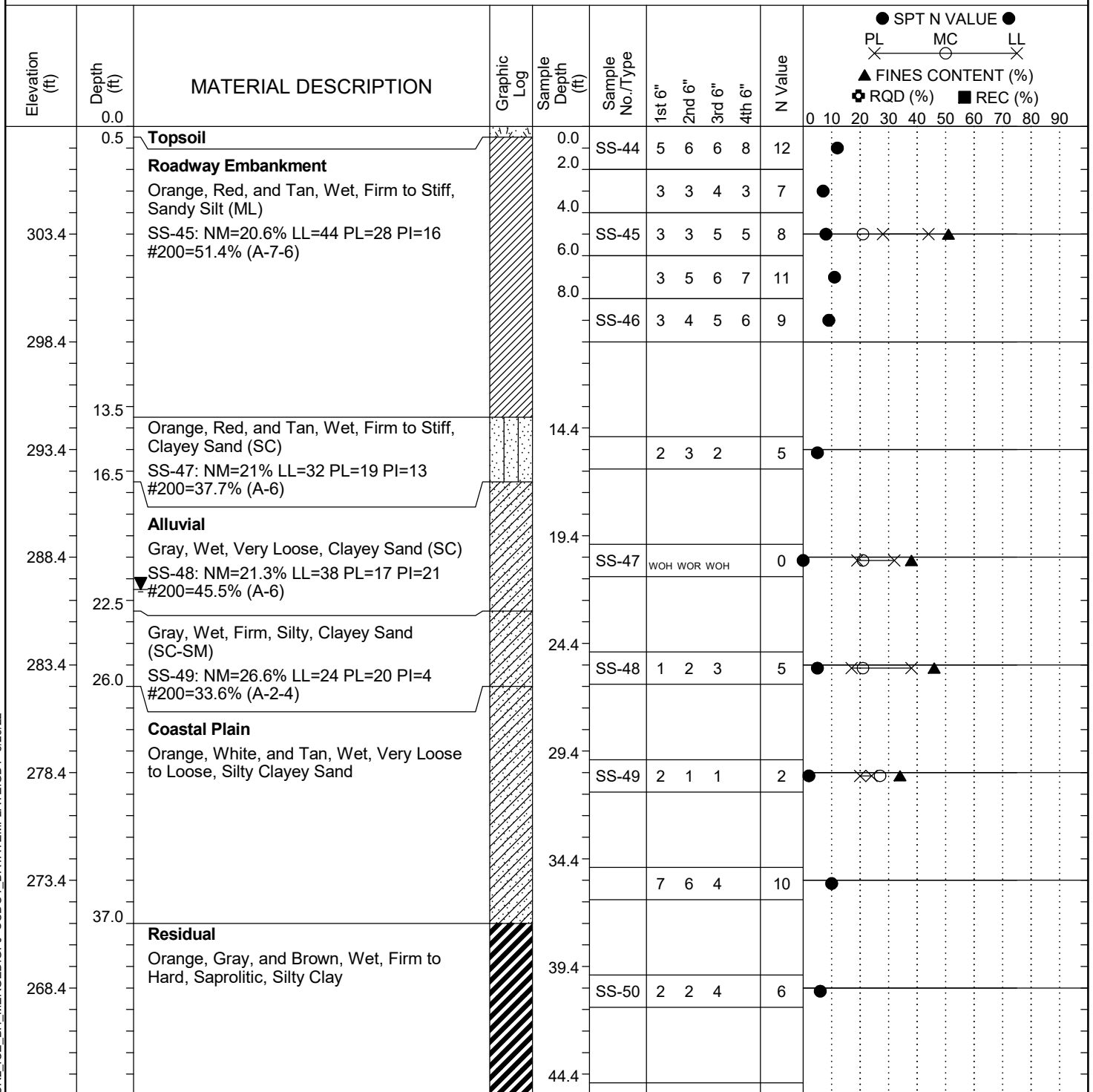
Project ID:	P039719	County:	Richland	Boring No.:	G-110
Site Description:	Carolina Crossroads Phase 2			Route:	Ramp
Eng./Geo.:	C. McIlroy	Boring Location:	396+46	Offset:	28 RT
Elev.:	309.3 ft	Latitude:	34.03921449	Longitude:	-81.09577882
Total Depth:	69.6 ft	Soil Depth:	69.6 ft	Core Depth:	N/A ft
Bore Hole Diameter (in):	2.25	Sampler Configuration		Liner Required:	Y (N)
Drill Machine:	D-50 #439	Drill Method:	RW	Hammer Type:	Automatic
Core Size:	N/A	Driller:	R. Cassell	Groundwater:	TOB N/A
				Energy Ratio:	90.8%
				24HR	23.5 ft



LEGEND

SAMPLER TYPE		DRILLING METHOD	
SS - Split Spoon	NQ - Rock Core, 1-7/8"	HSA - Hollow Stem Auger	RW - Rotary Wash
UD - Undisturbed Sample	CU - Cuttings	CFA - Continuous Flight Augers	RC - Rock Core
AWG - Rock Core, 1-1/8"	CT - Continuous Tube	DC - Driving Casing	

Project ID: P039719				County: Richland		Boring No.: G-111		
Site Description:		Carolina Crossroads Phase 2					Route: Ramp	
Eng./Geo.: C. McIlroy		Boring Location: 396+58			Offset: 28 LT		Alignment: RAMPF	
Elev.: 308.4 ft		Latitude: 34.03937037		Longitude: -81.09584966		Date Started: 5/3/2022		
Total Depth: 89.5 ft		Soil Depth: 89.5 ft		Core Depth: N/A ft		Date Completed: 5/3/2022		
Bore Hole Diameter (in): 2.25		Sampler Configuration			Liner Required: Y (N)		Liner Used: Y (N)	
Drill Machine: D-50 #439		Drill Method: RW		Hammer Type: Automatic		Energy Ratio: 90.8%		
Core Size: N/A		Driller: R. Cassell		Groundwater: TOB N/A		24HR 21.5 ft		



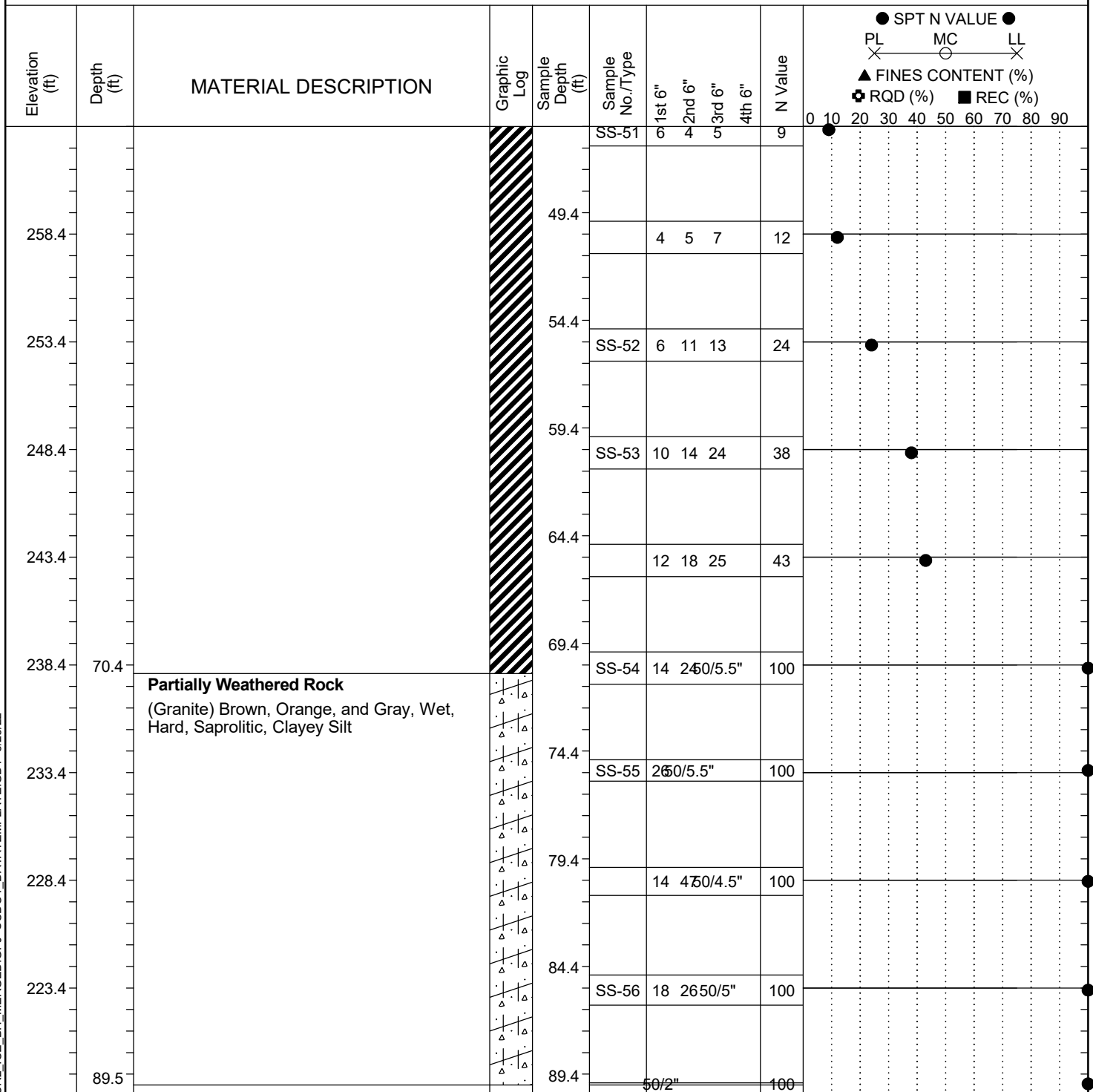
LEGEND

Continued Next Page

SC_DOT 20-01_CCR2_ICE_BH_MERGED.GPJ SCDOT_DATATEMPLATE.GDT 5/23/22

SAMPLER TYPE		DRILLING METHOD	
SS - Split Spoon	NQ - Rock Core, 1-7/8"	HSA - Hollow Stem Auger	RW - Rotary Wash
UD - Undisturbed Sample	CU - Cuttings	CFA - Continuous Flight Augers	RC - Rock Core
AWG - Rock Core, 1-1/8"	CT - Continuous Tube	DC - Driving Casing	

Project ID:	P039719	County:	Richland	Boring No.:	G-111
Site Description:	Carolina Crossroads Phase 2			Route:	Ramp
Eng./Geo.:	C. McIlroy	Boring Location:	396+58	Offset:	28 LT
Elev.:	308.4 ft	Latitude:	34.03937037	Longitude:	-81.09584966
Total Depth:	89.5 ft	Soil Depth:	89.5 ft	Date Started:	5/3/2022
Core Depth:	N/A ft	Date Completed:	5/3/2022		
Bore Hole Diameter (in):	2.25	Sampler Configuration		Liner Required:	Y (N)
Liner Used:	Y (N)				
Drill Machine:	D-50 #439	Drill Method:	RW	Hammer Type:	Automatic
Energy Ratio:	90.8%				
Core Size:	N/A	Driller:	R. Cassell	Groundwater:	TOB N/A
24HR	21.5 ft				



LEGEND

Continued Next Page

SAMPLER TYPE		DRILLING METHOD	
SS - Split Spoon	NQ - Rock Core, 1-7/8"	HSA - Hollow Stem Auger	RW - Rotary Wash
UD - Undisturbed Sample	CU - Cuttings	CFA - Continuous Flight Augers	RC - Rock Core
AWG - Rock Core, 1-1/8"	CT - Continuous Tube	DC - Driving Casing	

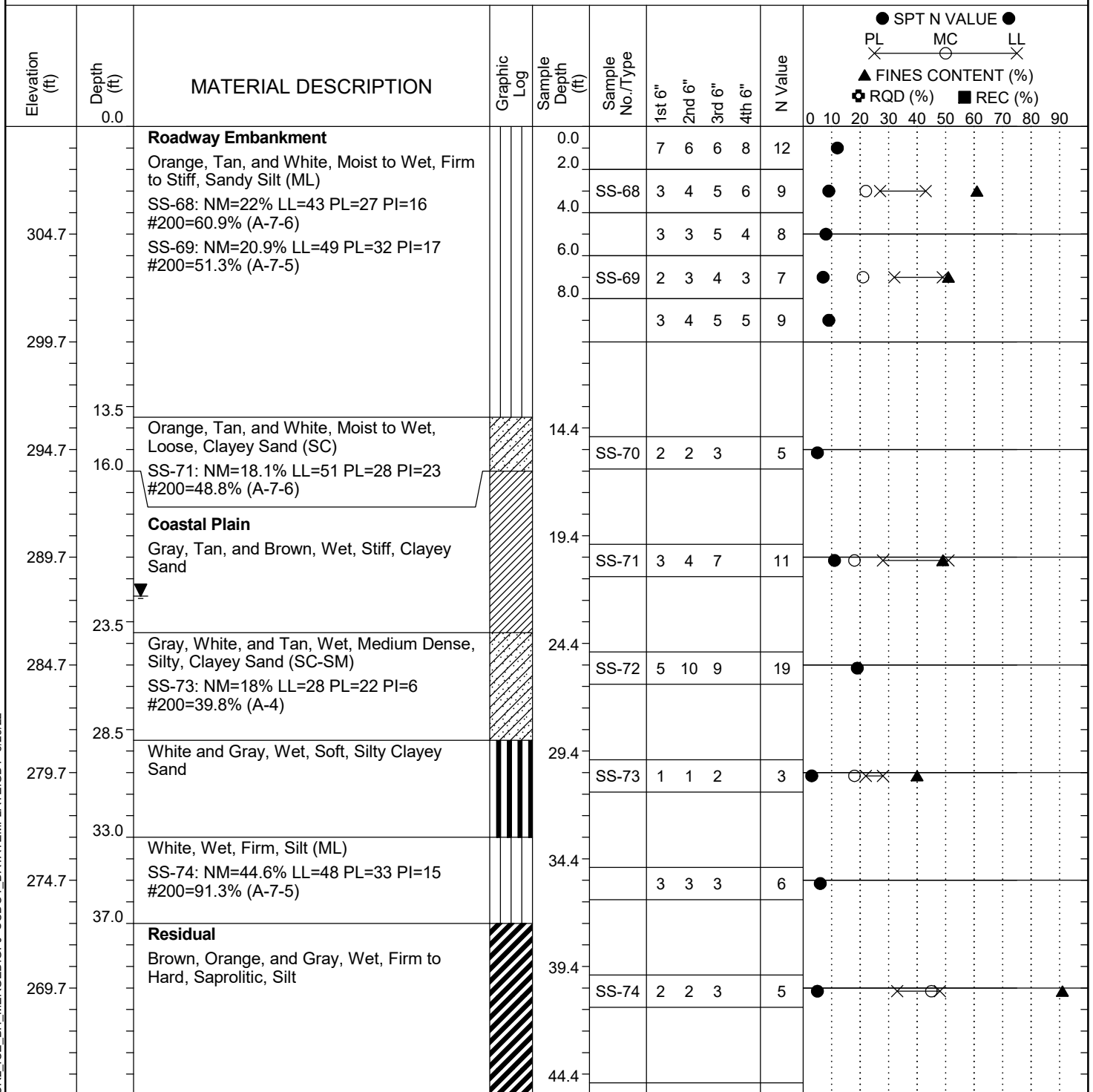
Project ID:		P039719			County:		Richland		Boring No.:		G-111				
Site Description:			Carolina Crossroads Phase 2							Route:		Ramp			
Eng./Geo.:		C. McIlroy		Boring Location:		396+58		Offset:		28 LT		Alignment:		RAMPF	
Elev.:		308.4 ft		Latitude:		34.03937037		Longitude:		-81.09584966		Date Started:		5/3/2022	
Total Depth:		89.5 ft		Soil Depth:		89.5 ft		Core Depth:		N/A ft		Date Completed:		5/3/2022	
Bore Hole Diameter (in):			2.25		Sampler Configuration			Liner Required:		Y (N)		Liner Used:		Y (N)	
Drill Machine:		D-50 #439		Drill Method:		RW		Hammer Type:		Automatic		Energy Ratio:		90.8%	
Core Size:		N/A		Driller:		R. Cassell		Groundwater:		TOB N/A		24HR		21.5 ft	

Elevation (ft)	Depth (ft)	MATERIAL DESCRIPTION	Graphic Log	Sample Depth (ft)	Sample No./Type	1st 6"	2nd 6"	3rd 6"	4th 6"	N Value	● SPT N VALUE ● PL MC LL X X X ▲ FINES CONTENT (%) + RQD (%) ■ REC (%) 0 10 20 30 40 50 60 70 80 90
		Boring Terminated at 89.5 Feet									
213.4											
208.4											
203.4											
198.4											
193.4											
188.4											
183.4											
178.4											

LEGEND

SAMPLER TYPE		DRILLING METHOD	
SS - Split Spoon	NQ - Rock Core, 1-7/8"	HSA - Hollow Stem Auger	RW - Rotary Wash
UD - Undisturbed Sample	CU - Cuttings	CFA - Continuous Flight Augers	RC - Rock Core
AWG - Rock Core, 1-1/8"	CT - Continuous Tube	DC - Driving Casing	

Project ID:	P039719	County:	Richland	Boring No.:	G-112
Site Description:	Carolina Crossroads Phase 2			Route:	Ramp
Eng./Geo.:	C. McIlroy	Boring Location:	397+03	Offset:	24 LT
Elev.:	309.7 ft	Latitude:	34.039457	Longitude:	-81.09576062
Total Depth:	70.3 ft	Soil Depth:	70.3 ft	Date Started:	5/4/2022
Core Depth:	N/A ft	Date Completed:	5/4/2022	Alignment:	RAMPF
Bore Hole Diameter (in):	2.25	Sampler Configuration		Liner Required:	Y (N)
Drill Machine:	D-50 #439	Drill Method:	RW	Energy Ratio:	90.8%
Core Size:	N/A	Driller:	R. Cassell	Groundwater:	TOB N/A
				24HR	21.8 ft

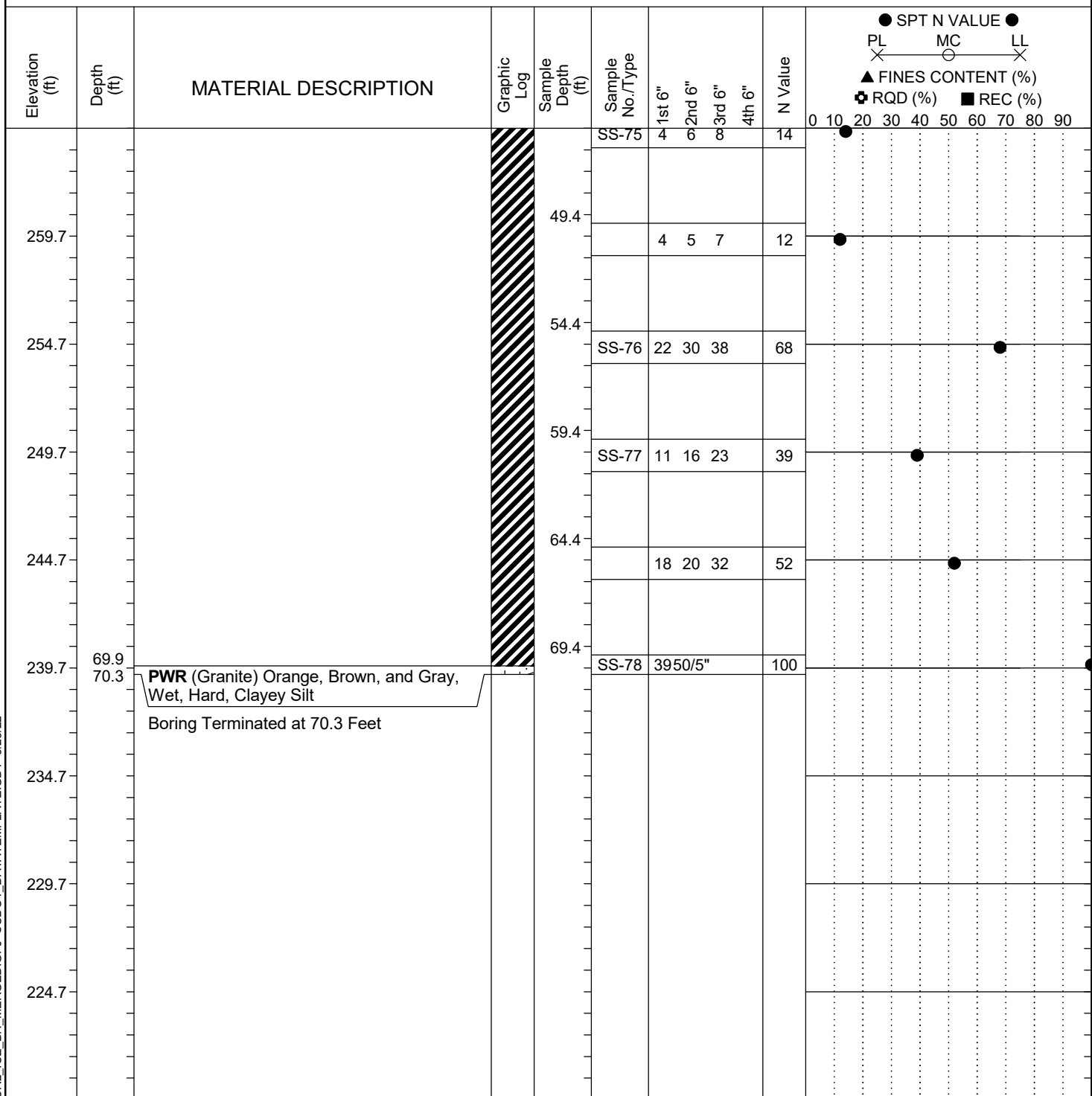


LEGEND

Continued Next Page

SAMPLER TYPE		DRILLING METHOD	
SS - Split Spoon	NQ - Rock Core, 1-7/8"	HSA - Hollow Stem Auger	RW - Rotary Wash
UD - Undisturbed Sample	CU - Cuttings	CFA - Continuous Flight Augers	RC - Rock Core
AWG - Rock Core, 1-1/8"	CT - Continuous Tube	DC - Driving Casing	

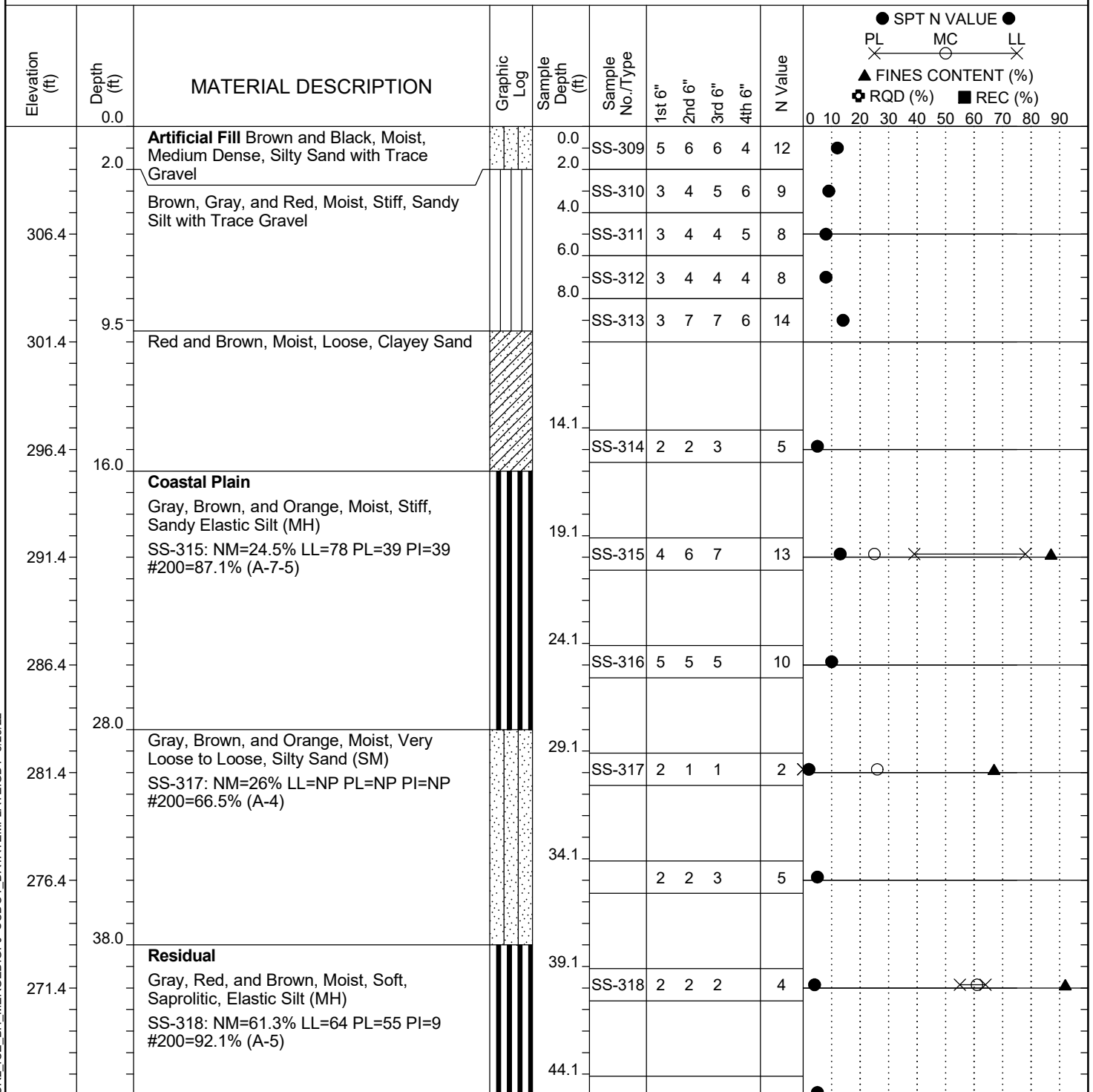
Project ID:	P039719	County:	Richland	Boring No.:	G-112
Site Description:	Carolina Crossroads Phase 2			Route:	Ramp
Eng./Geo.:	C. McIlroy	Boring Location:	397+03	Offset:	24 LT
Elev.:	309.7 ft	Latitude:	34.039457	Longitude:	-81.09576062
Total Depth:	70.3 ft	Soil Depth:	70.3 ft	Date Started:	5/4/2022
Core Depth:	N/A ft	Date Completed:	5/4/2022		
Bore Hole Diameter (in):	2.25	Sampler Configuration		Liner Required:	Y (N)
Drill Machine:	D-50 #439	Drill Method:	RW	Energy Ratio:	90.8%
Core Size:	N/A	Driller:	R. Cassell	Groundwater:	TOB N/A
				24HR	21.8 ft



LEGEND

SAMPLER TYPE		DRILLING METHOD	
SS - Split Spoon	NQ - Rock Core, 1-7/8"	HSA - Hollow Stem Auger	RW - Rotary Wash
UD - Undisturbed Sample	CU - Cuttings	CFA - Continuous Flight Augers	RC - Rock Core
AWG - Rock Core, 1-1/8"	CT - Continuous Tube	DC - Driving Casing	

Project ID:	P039719	County:	Richland	Boring No.:	G-113
Site Description:	Carolina Crossroads Phase 2			Route:	Ramp
Eng./Geo.:	M. Stanbury	Boring Location:	397+32	Offset:	31 RT
Elev.:	311.4 ft	Latitude:	34.03934678	Longitude:	-81.09556744
Total Depth:	84.9 ft	Soil Depth:	84.9 ft	Date Started:	3/9/2022
Core Depth:	N/A ft	Date Completed:	3/9/2022		
Bore Hole Diameter (in):	2.25	Sampler Configuration		Liner Required:	Y (N)
Drill Machine:	D-50 #439	Drill Method:	RW	Hammer Type:	Automatic
Core Size:	N/A	Driller:	R. Cassell	Energy Ratio:	90.8%
		Groundwater:	TOB	24HR	Dry



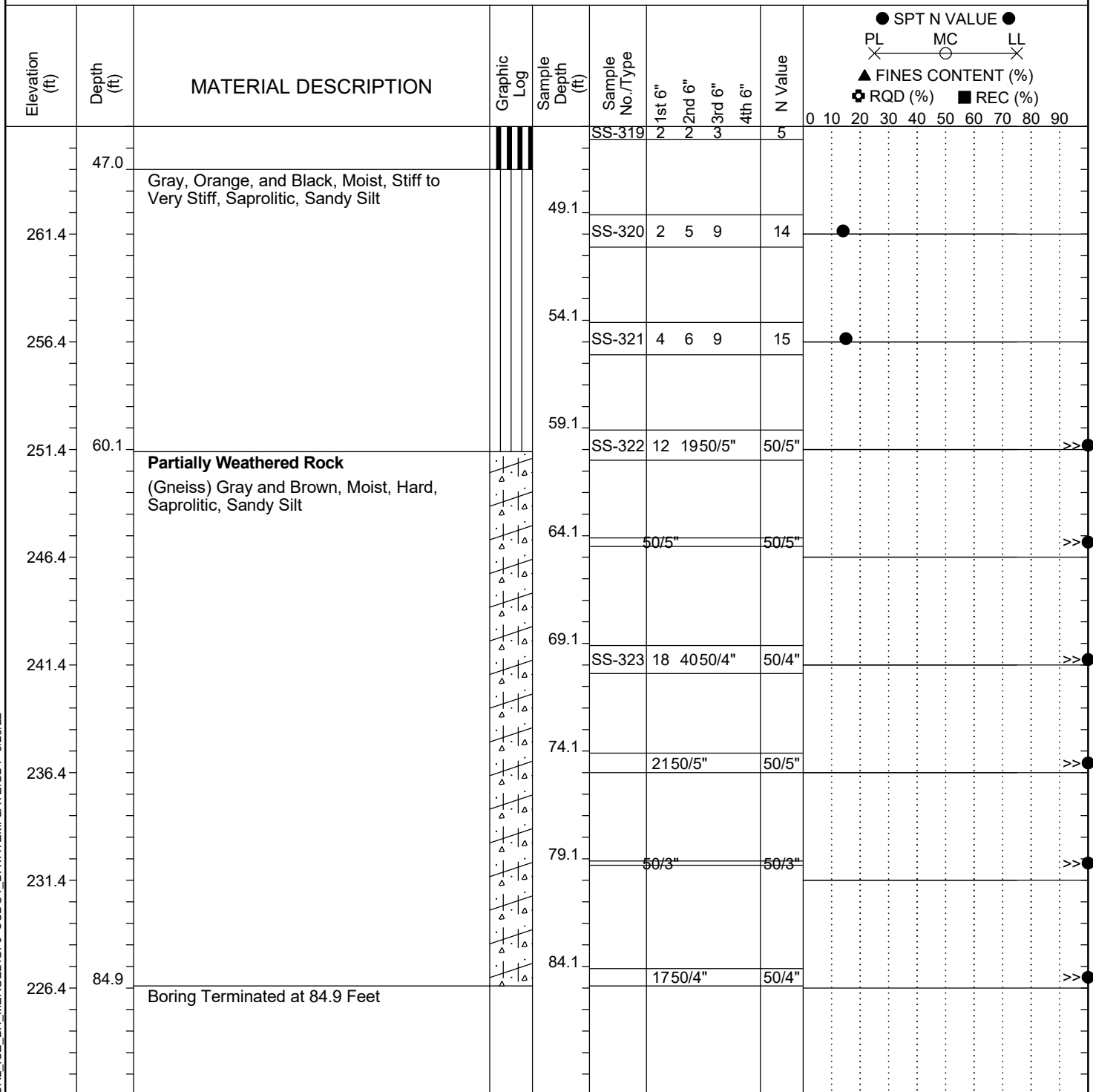
LEGEND

Continued Next Page

SC_DOT 20-01_CCR2_ICE_BH_MERGED.GPJ SCDOT_DATATEMPLATE.GDT 5/23/22

SAMPLER TYPE		DRILLING METHOD	
SS - Split Spoon	NQ - Rock Core, 1-7/8"	HSA - Hollow Stem Auger	RW - Rotary Wash
UD - Undisturbed Sample	CU - Cuttings	CFA - Continuous Flight Augers	RC - Rock Core
AWG - Rock Core, 1-1/8"	CT - Continuous Tube	DC - Driving Casing	

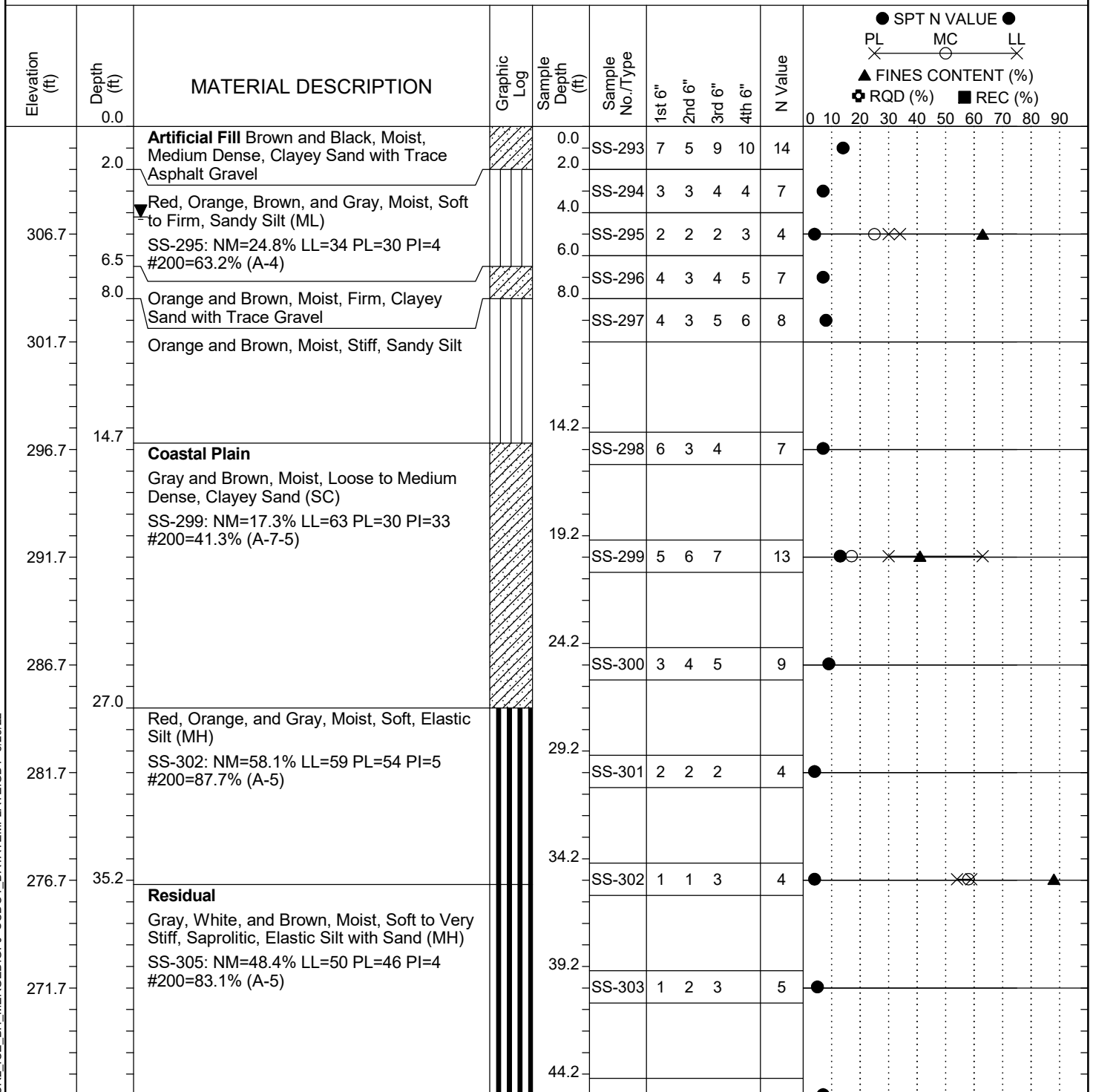
Project ID: P039719				County: Richland		Boring No.: G-113		
Site Description:		Carolina Crossroads Phase 2					Route: Ramp	
Eng./Geo.: M. Stanbury		Boring Location: 397+32			Offset: 31 RT		Alignment: RAMPF	
Elev.: 311.4 ft		Latitude: 34.03934678		Longitude: -81.09556744		Date Started: 3/9/2022		
Total Depth: 84.9 ft		Soil Depth: 84.9 ft		Core Depth: N/A ft		Date Completed: 3/9/2022		
Bore Hole Diameter (in): 2.25		Sampler Configuration			Liner Required: Y (N)		Liner Used: Y (N)	
Drill Machine: D-50 #439		Drill Method: RW		Hammer Type: Automatic		Energy Ratio: 90.8%		
Core Size: N/A		Driller: R. Cassell		Groundwater: TOB N/A		24HR Dry		



LEGEND

SAMPLER TYPE		DRILLING METHOD	
SS - Split Spoon	NQ - Rock Core, 1-7/8"	HSA - Hollow Stem Auger	RW - Rotary Wash
UD - Undisturbed Sample	CU - Cuttings	CFA - Continuous Flight Augers	RC - Rock Core
AWG - Rock Core, 1-1/8"	CT - Continuous Tube	DC - Driving Casing	

Project ID:	P039719				County:	Richland			Boring No.:	G-114	
Site Description:	Carolina Crossroads Phase 2								Route:	Ramp	
Eng./Geo.:	M. Stanbury		Boring Location:	397+51		Offset:	34 RT		Alignment:	RAMPF	
Elev.:	311.7 ft		Latitude:	34.0394073		Longitude:	-81.09551299		Date Started:	3/8/2022	
Total Depth:	70 ft		Soil Depth:	70 ft		Core Depth:	N/A ft		Date Completed:	3/8/2022	
Bore Hole Diameter (in):	2.25		Sampler Configuration			Liner Required:	Y (N)		Liner Used:	Y (N)	
Drill Machine:	D-50 #439		Drill Method:	RW		Hammer Type:	Automatic		Energy Ratio:	90.8%	
Core Size:	N/A		Driller:	R. Cassell		Groundwater:	TOB	N/A		24HR	24.2 ft



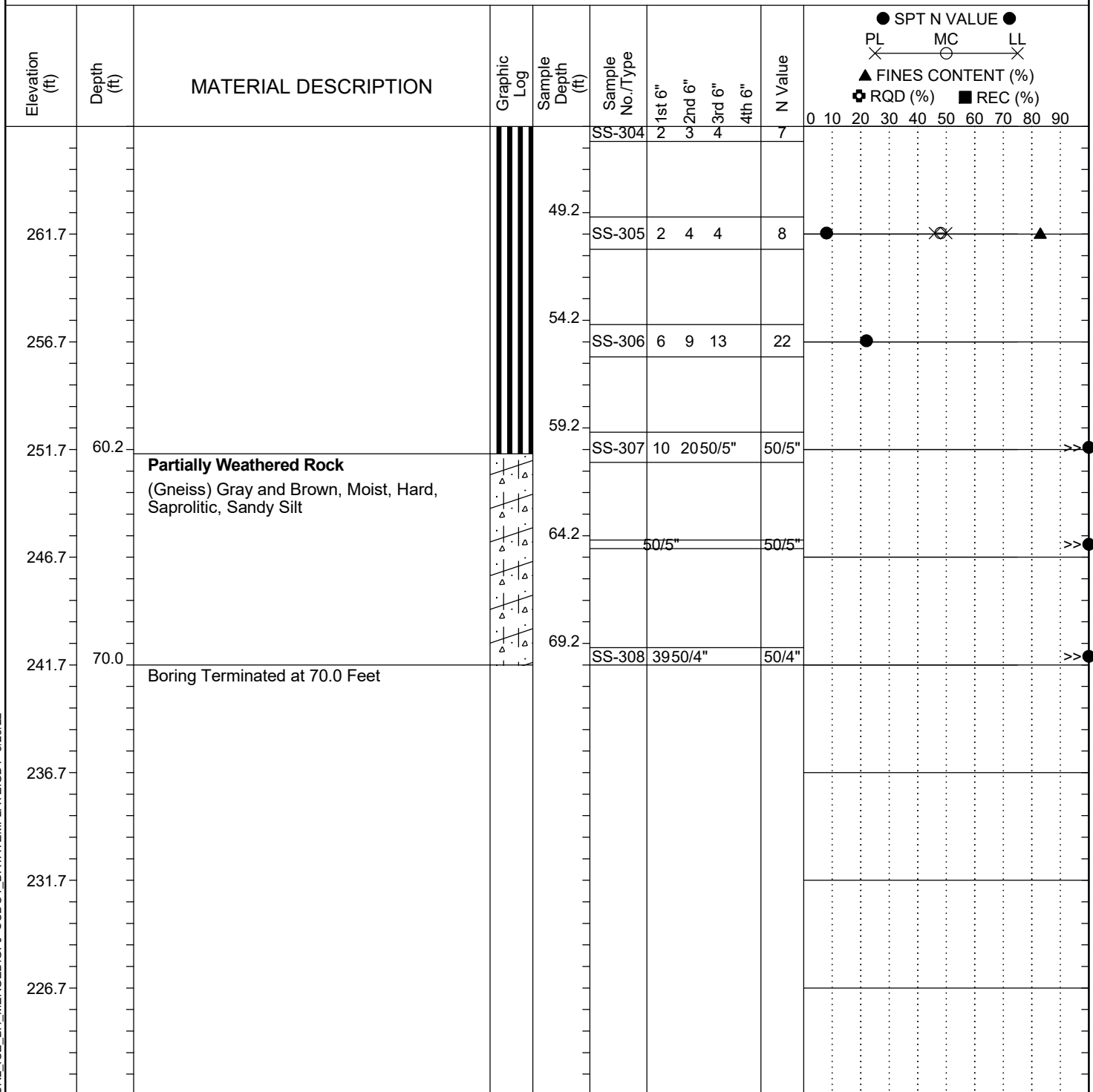
LEGEND

Continued Next Page

SC_DOT 20-81_CCR2_ICE_BH_MERGED.GPJ SCDOT_DATATEMPLATE.GDT 5/23/22

SAMPLER TYPE			DRILLING METHOD	
SS - Split Spoon	NQ - Rock Core, 1-7/8"		HSA - Hollow Stem Auger	RW - Rotary Wash
UD - Undisturbed Sample	CU - Cuttings		CFA - Continuous Flight Augers	RC - Rock Core
AWG - Rock Core, 1-1/8"	CT - Continuous Tube		DC - Driving Casing	

Project ID:	P039719	County:	Richland	Boring No.:	G-114
Site Description:	Carolina Crossroads Phase 2			Route:	Ramp
Eng./Geo.:	M. Stanbury	Boring Location:	397+51	Offset:	34 RT
Elev.:	311.7 ft	Latitude:	34.0394073	Longitude:	-81.09551299
Total Depth:	70 ft	Soil Depth:	70 ft	Core Depth:	N/A ft
Date Started:	3/8/2022				
Date Completed:	3/8/2022				
Bore Hole Diameter (in):	2.25	Sampler Configuration	Liner Required: Y (N)		Liner Used: Y (N)
Drill Machine:	D-50 #439	Drill Method:	RW	Hammer Type:	Automatic
Energy Ratio:	90.8%				
Core Size:	N/A	Driller:	R. Cassell	Groundwater:	TOB N/A
24HR	24.2 ft				



LEGEND

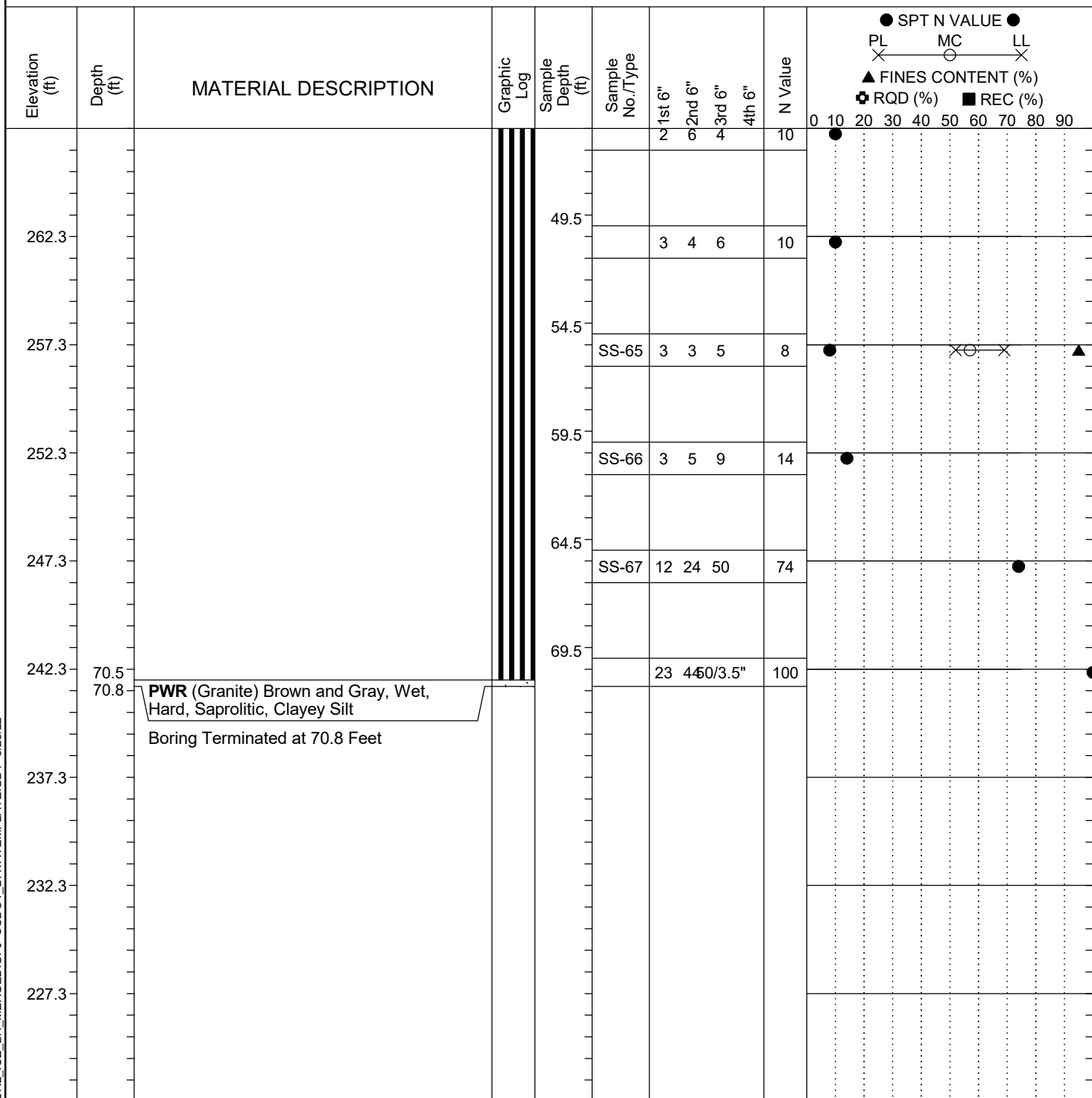
SAMPLER TYPE		DRILLING METHOD	
SS - Split Spoon	NQ - Rock Core, 1-7/8"	HSA - Hollow Stem Auger	RW - Rotary Wash
UD - Undisturbed Sample	CU - Cuttings	CFA - Continuous Flight Augers	RC - Rock Core
AWG - Rock Core, 1-1/8"	CT - Continuous Tube	DC - Driving Casing	

[illegible]

Continued Next Page

SAMPLER TYPE		DRILLING METHOD	
SS - Split Spoon	NQ - Rock Core, 1-7/8"	HSA - Hollow Stem Auger	RW - Rotary Wash
UD - Undisturbed Sample	CU - Cuttings	CFA - Continuous Flight Augers	RC - Rock Core
AWG - Rock Core, 1-1/8"	CT - Continuous Tube	DC - Driving Casing	

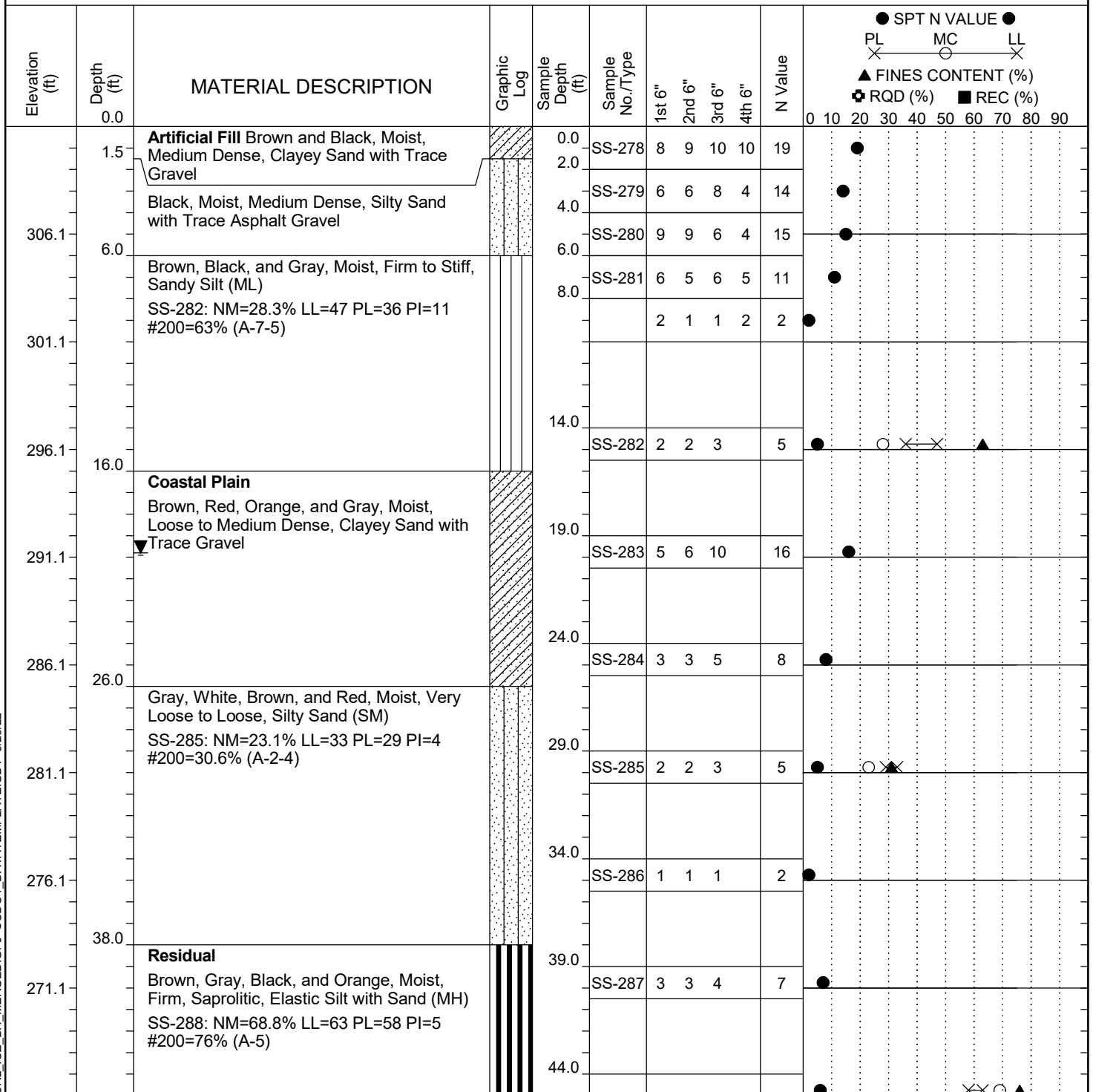
Project ID:	P039719	County:	Richland	Boring No.:	G-115
Site Description:	Carolina Crossroads Phase 2			Route:	Ramp
Eng./Geo.:	C. McIlroy	Boring Location:	398+00	Offset:	23 LT
Elev.:	312.3 ft	Latitude:	34.03960702	Longitude:	-81.09548966
Total Depth:	70.8 ft	Soil Depth:	70.8 ft	Date Started:	5/4/2022
Core Depth:	N/A ft	Date Completed:	5/4/2022		
Bore Hole Diameter (in):	2.25	Sampler Configuration		Liner Required:	Y (N)
Drill Machine:	D-50 #439	Drill Method:	RW	Hammer Type:	Automatic
Core Size:	N/A	Driller:	R. Cassell	Energy Ratio:	90.8%
		Groundwater:	TOB	24HR	21.9 ft



LEGEND

SAMPLER TYPE		DRILLING METHOD	
SS - Split Spoon	NQ - Rock Core, 1-7/8"	HSA - Hollow Stem Auger	RW - Rotary Wash
UD - Undisturbed Sample	CU - Cuttings	CFA - Continuous Flight Augers	RC - Rock Core
AWG - Rock Core, 1-1/8"	CT - Continuous Tube	DC - Driving Casing	

Project ID:	P039719	County:	Richland	Boring No.:	G-116
Site Description:	Carolina Crossroads Phase 2			Route:	Ramp
Eng./Geo.:	M. Stanbury	Boring Location:	397+95	Offset:	60 RT
Elev.:	311.1 ft	Latitude:	34.03937795	Longitude:	-81.09530646
Total Depth:	70.4 ft	Soil Depth:	70.4 ft	Date Started:	3/8/2022
Core Depth:	N/A ft	Date Completed:	3/8/2022		
Bore Hole Diameter (in):	2.25	Sampler Configuration		Liner Required:	Y (N)
Drill Machine:	D-50 #439	Drill Method:	RW	Hammer Type:	Automatic
Core Size:	N/A	Driller:	R. Cassell	Energy Ratio:	90.8%
		Groundwater:	TOB	24HR	19.8 ft

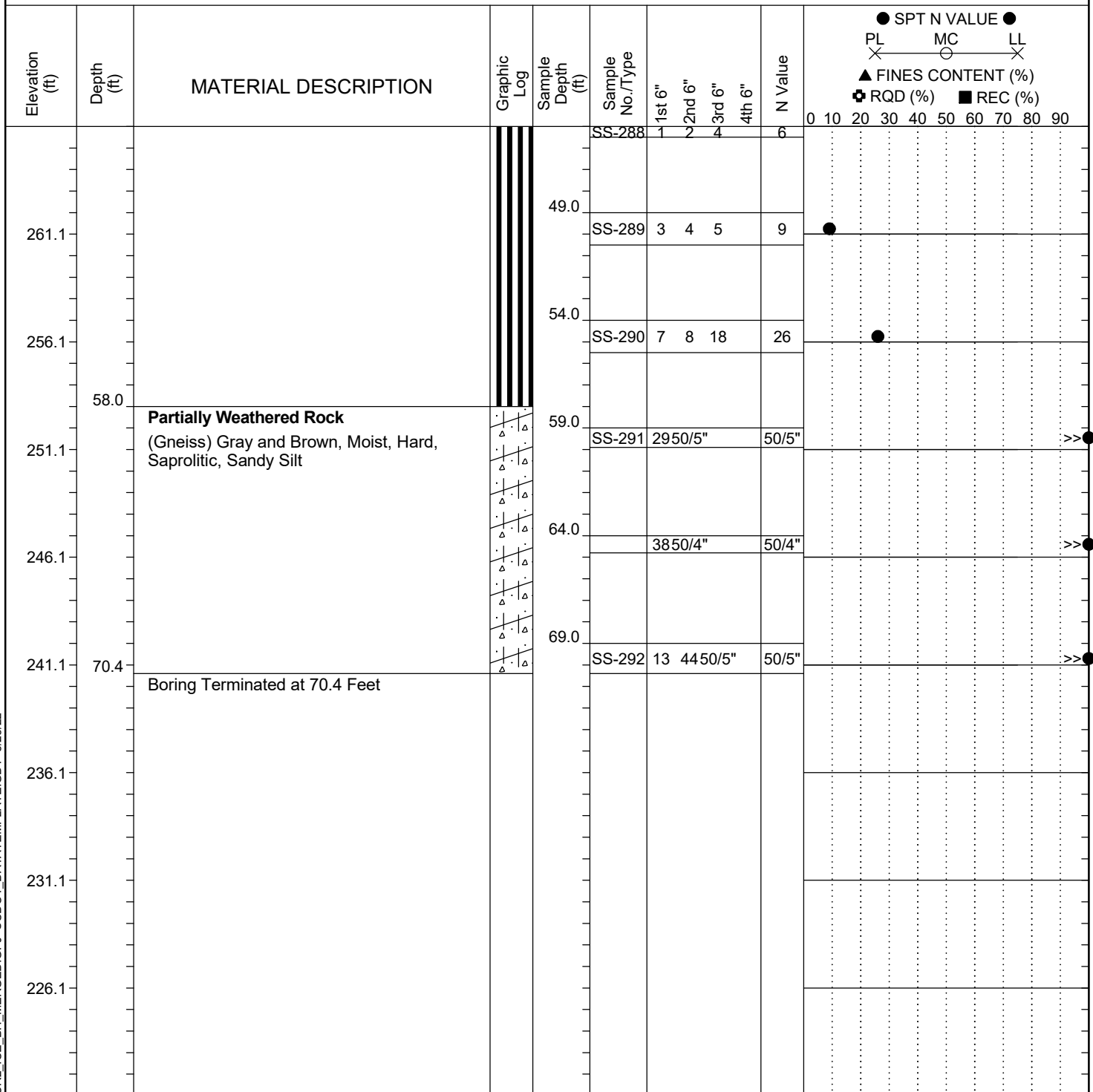


LEGEND

Continued Next Page

SAMPLER TYPE		DRILLING METHOD	
SS - Split Spoon	NQ - Rock Core, 1-7/8"	HSA - Hollow Stem Auger	RW - Rotary Wash
UD - Undisturbed Sample	CU - Cuttings	CFA - Continuous Flight Augers	RC - Rock Core
AWG - Rock Core, 1-1/8"	CT - Continuous Tube	DC - Driving Casing	

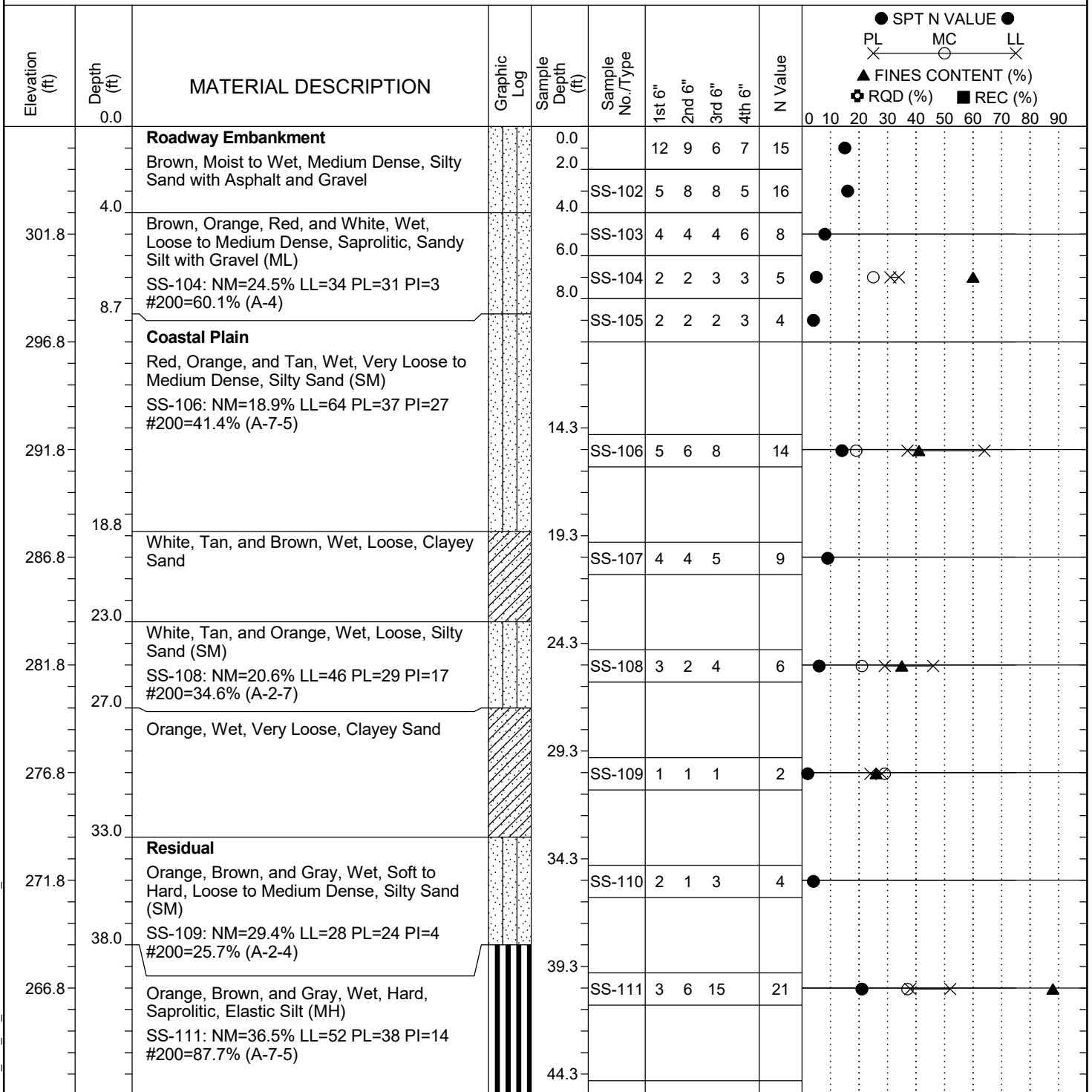
Project ID:	P039719	County:	Richland	Boring No.:	G-116
Site Description:	Carolina Crossroads Phase 2			Route:	Ramp
Eng./Geo.:	M. Stanbury	Boring Location:	397+95	Offset:	60 RT
Elev.:	311.1 ft	Latitude:	34.03937795	Longitude:	-81.09530646
Total Depth:	70.4 ft	Soil Depth:	70.4 ft	Core Depth:	N/A ft
Date Started:	3/8/2022				
Date Completed:	3/8/2022				
Bore Hole Diameter (in):	2.25	Sampler Configuration	Liner Required: Y (N)		Liner Used: Y (N)
Drill Machine:	D-50 #439	Drill Method:	RW	Hammer Type:	Automatic
Energy Ratio:	90.8%				
Core Size:	N/A	Driller:	R. Cassell	Groundwater:	TOB N/A
24HR	19.8 ft				



LEGEND

SAMPLER TYPE		DRILLING METHOD	
SS - Split Spoon	NQ - Rock Core, 1-7/8"	HSA - Hollow Stem Auger	RW - Rotary Wash
UD - Undisturbed Sample	CU - Cuttings	CFA - Continuous Flight Augers	RC - Rock Core
AWG - Rock Core, 1-1/8"	CT - Continuous Tube	DC - Driving Casing	

Project ID:	P039719	County:	Richland	Boring No.:	G-117
Site Description:	Carolina Crossroads Phase 2			Route:	Ramp
Eng./Geo.:	C. McIlroy	Boring Location:	395+25	Offset:	20 RT
Elev.:	306.8 ft	Latitude:	34.03905087	Longitude:	-81.09612992
Total Depth:	70.1 ft	Soil Depth:	70.1 ft	Core Depth:	N/A ft
Bore Hole Diameter (in):	2.25	Sampler Configuration		Liner Required:	Y (N)
Drill Machine:	D-50 #435	Drill Method:	RW	Hammer Type:	Automatic
Core Size:	N/A	Driller:	M. Morgan	Groundwater:	TOB N/A
				Energy Ratio:	84.4%
				24HR	Dry

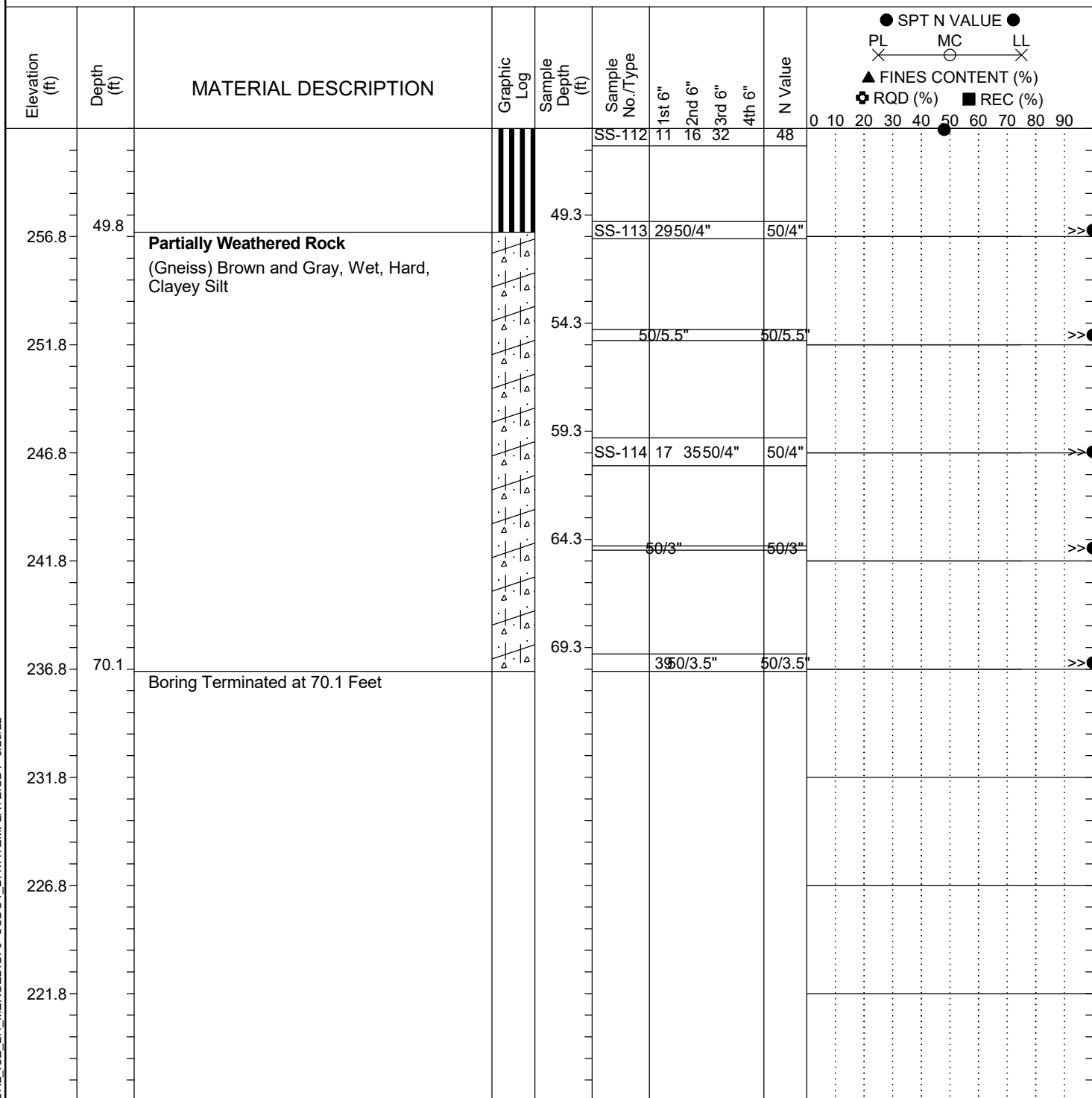


LEGEND

Continued Next Page

SAMPLER TYPE		DRILLING METHOD	
SS - Split Spoon	NQ - Rock Core, 1-7/8"	HSA - Hollow Stem Auger	RW - Rotary Wash
UD - Undisturbed Sample	CU - Cuttings	CFA - Continuous Flight Augers	RC - Rock Core
AWG - Rock Core, 1-1/8"	CT - Continuous Tube	DC - Driving Casing	

Project ID:	P039719	County:	Richland	Boring No.:	G-117
Site Description:	Carolina Crossroads Phase 2			Route:	Ramp
Eng./Geo.:	C. McIlroy	Boring Location:	395+25	Offset:	20 RT
Elev.:	306.8 ft	Latitude:	34.03905087	Longitude:	-81.09612992
Total Depth:	70.1 ft	Soil Depth:	70.1 ft	Core Depth:	N/A ft
Bore Hole Diameter (in):	2.25	Sampler Configuration		Liner Required:	Y (N)
Drill Machine:	D-50 #435	Drill Method:	RW	Hammer Type:	Automatic
Core Size:	N/A	Driller:	M. Morgan	Groundwater:	TOB N/A
				Energy Ratio:	84.4%
				24HR	Dry



LEGEND

SAMPLER TYPE		DRILLING METHOD	
SS - Split Spoon	NQ - Rock Core, 1-7/8"	HSA - Hollow Stem Auger	RW - Rotary Wash
UD - Undisturbed Sample	CU - Cuttings	CFA - Continuous Flight Augers	RC - Rock Core
AWG - Rock Core, 1-1/8"	CT - Continuous Tube	DC - Driving Casing	